



# glsun 光隆科技



Guilin GLsun Science and Tech Group Co., LTD.

# Profile

Founded in 2001, GLsun focuses on the development of semiconductor full process technology platform for the industrialization of optical chips, including optical chip simulation design, Epitaxial growth MOCVD, Grating manufacturing, Dielectric film deposition, Nano photoetching, Metal evaporation, Chip thinning, Mirror coating, Cleavage test, Chip packaging, etc and other dozens of manufacturing procedures. GLsun has mastered the core key technology of each process, has epitaxial growth MOVCD technology and quantum well nanotechnology, and has grasped domestic leading manufacturing processes such as 3-inch holographic exposure grating. We can not only develop and manufacture independently, but also undertake all stages of OEM from design to manufacture. Independent R&D and production and opening-up services have effectively filled the domestic gap in this field.

With widely production portfolio, our products including DFB/VCSEL LD chips (2.5G~25G), MPD, PIN/PD, APD chips (2.5G - 25G), TO CAN (TO46/TO56/TO38), 20 years raw manufacture experiences of high data rate passive optical devices and modules (FSI/Optical Switches/CWDM/DWDM/Circulators/Bypass Modules), customer designed modules, transmission, monitoring and system protection equipment,etc.

Passed ISO9001, ISO14001, RoHS, GLsun offers high quality products and services for well-known enterprises at home and abroad, enjoying a good reputation and high brand awareness in the industry.

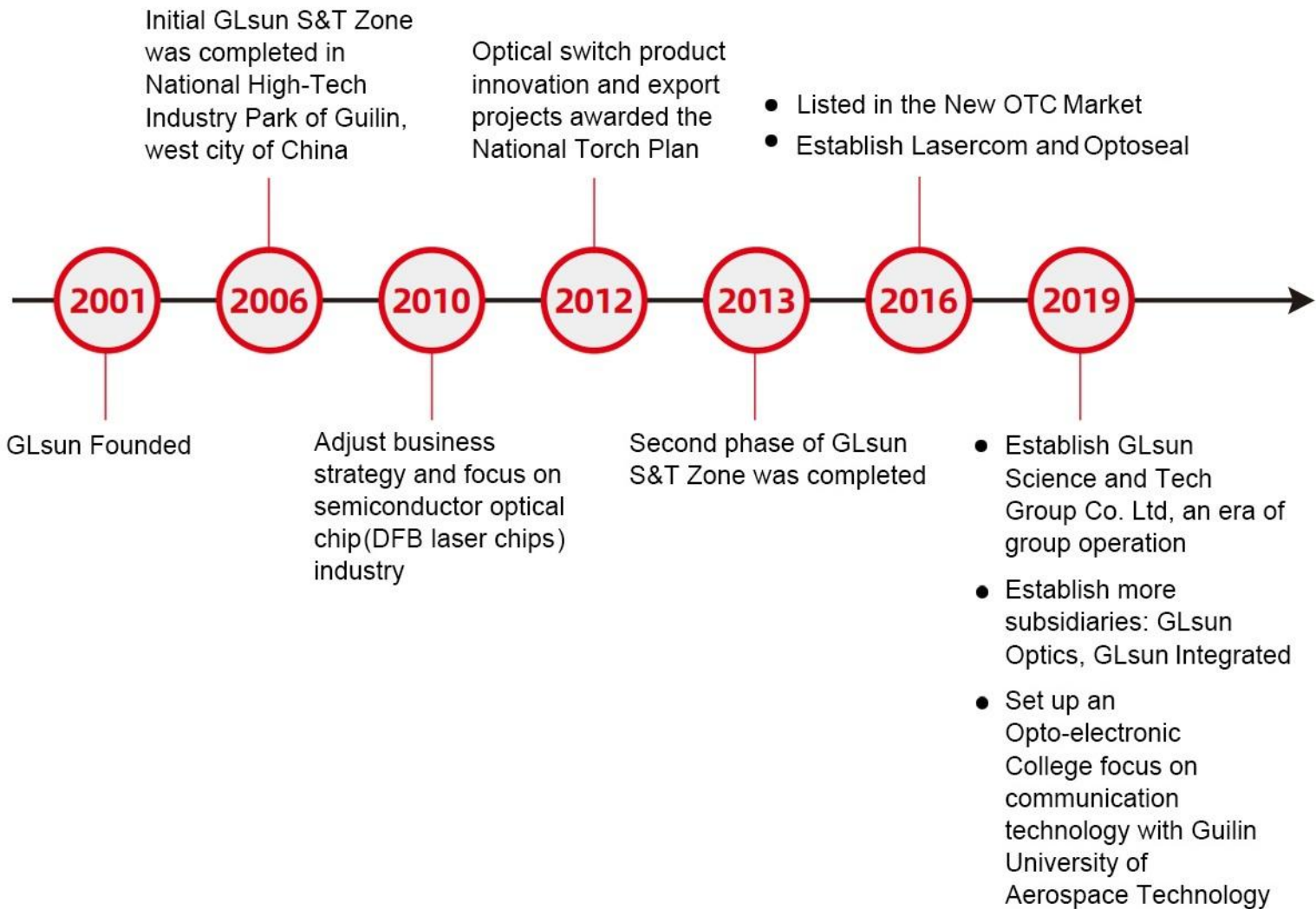




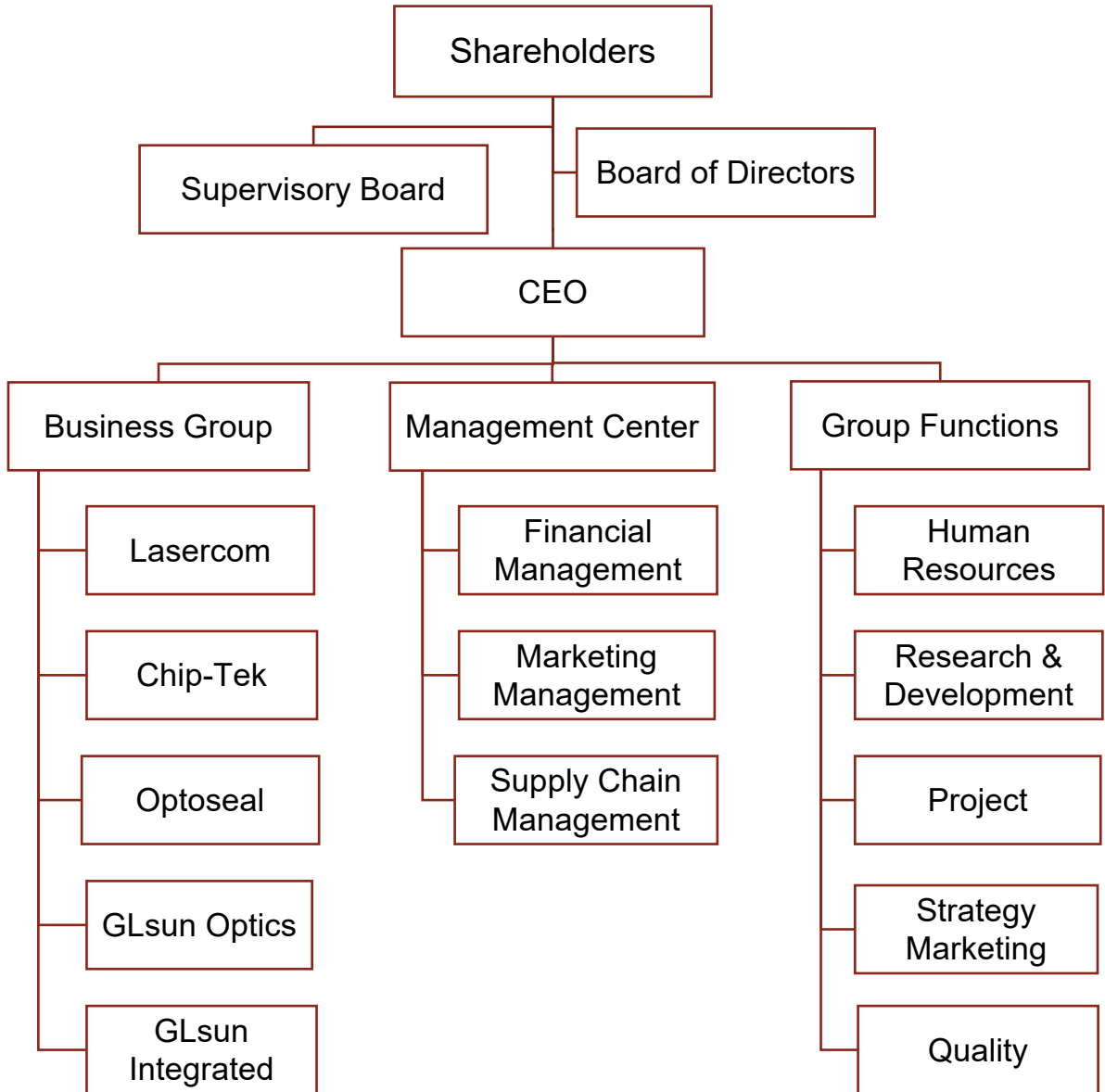
# Content

<b>Development Story.....</b>	<b>01</b>
<b>Company Structure.....</b>	<b>02</b>
<b>Business Group.....</b>	<b>03</b>
<b>Lasercom.....</b>	<b>04</b>
<b>Chip-Tek.....</b>	<b>05</b>
<b>Optoseal.....</b>	<b>06</b>
<b>GLsun Optics.....</b>	<b>07</b>
<b>GLsun Integrated.....</b>	<b>08</b>
<b>Test &amp; Production.....</b>	<b>10</b>
<b>Certification.....</b>	<b>11</b>
<b>Patents.....</b>	<b>12</b>
<b>Applications.....</b>	<b>13</b>

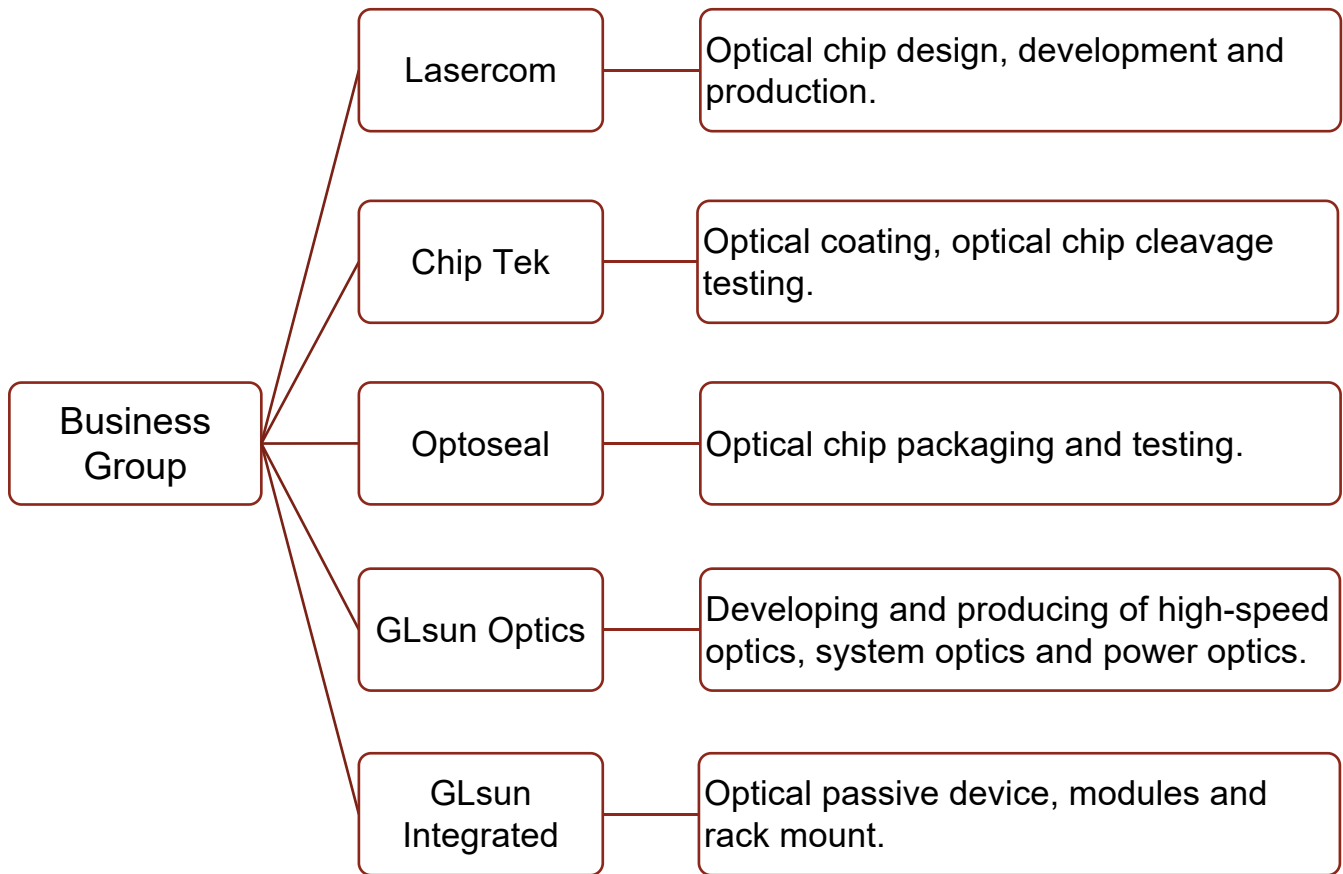
# Development Story



# Company Structure



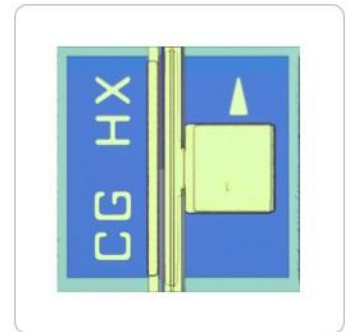
# Business Group





At Lasercom, we strive to become the world's premier semiconductor laser diode company. We own and operate a 3000m<sup>2</sup> III-V Fab, with full range of capabilities from chip design, epitaxy, and wafer processing to testing. Our products include 2.5Gbs, 10Gbs, 25Gbs to 40Gbs laser diodes and EML.

## DFB Laser Diode Chips



CHIP-TEK



Chip-Tek is a joint venture of China and Taiwan, mainly engaged in the OEM of LD facet coating, bar cutting cleavaging, bar and chip form testing. We introduce the technology team from Taiwan, providing professional and experienced OEM services. We committed ourselves to building the world's first OEM factory of chip back-end process.



### Production

- MPD Chip
- PIN PD / APD Chip (2.5G - 25G)



MPD



MPD



2.5G PIN



10G PIN





Established in September 2016, which is a high-tech enterprise engaged in R&D, production and sales of photodiode, laser, optical communication active component and optical integration technology. Optoseal has first-class High-tech packaging equipment and R&D technical team in the communications industry. Products involve PON network, intelligent interconnection, cloud computing and other fields.



**TO46**

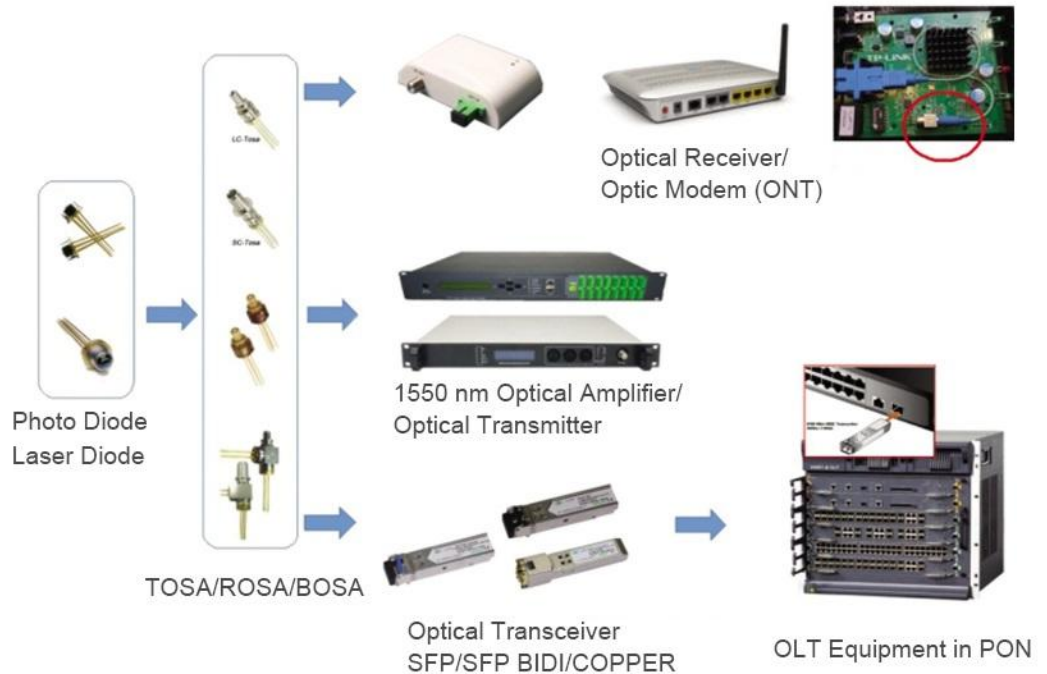
- 2.5G APD
- 2.5G super TIA



**TO56**

- 2.5G 1310nm DFB/LD
- 10G 1270nm DFB/LD

## Application





GLsun Optics is a wholly-owned subsidiary company of GLsun Group. GLsun Optics focuses on the R&D, manufacturing and sales of optical products, which involves multiple product directions of high-speed optics, system optics and power optics.

### | High Speed Optics



Free Space Isolator



Isolator with Receptacle



In-Line Isolator

### | System Optics



CWDM/DWDM



CWDM/DWDM Module



CCWDM



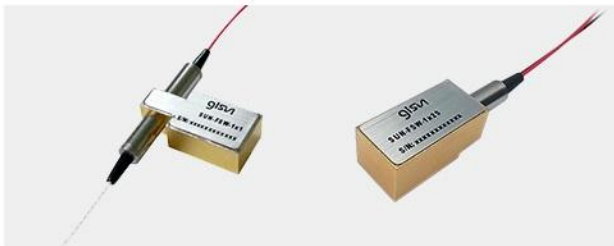
Optical Circulator



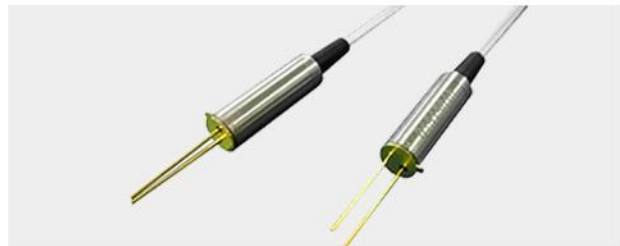
# GLsun Integrated

With almost 20-year efforts, GLsun Integrated has integrated the advantages of all basic resources to focus on development and production of all kinds of optical devices, integrated modules and line card/equipments, to provide one-stop services on OEM or ODM optical communication products, and to offer professional solutions in optical network applications. We now have four production lines: Optical Switch, MEMS, Integrated Module and Rack Mount.

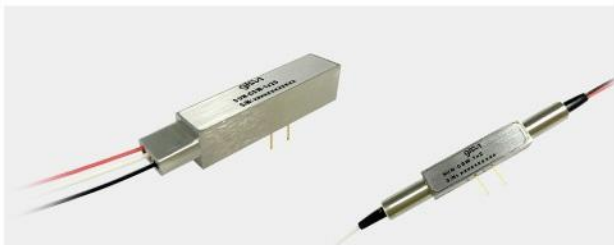
## | Optical Components



Relay Optical Switch



MEMS VOA



Magneto Optical Switch



MEMS Optical Switch

# GLsun Integrated

## | Integrated Module



Optical Switch Module



WDM Module

## | Rack Mount



Rack Mount Optical Switch



Cable Monitoring Equipment



Bypass Optical Protection



Transmission / Protection / Monitoring

# Test & Production



# Certification



**ISO 9001**

**ISO 14001**



**RoHS**



**RoHS**



**RoHS**



# Patents



# Application



5G & Optical Telecom



Data Center



Laser Communication



AI & UAV Monitoring



VR Virtual Reality



Autonomous Driving



Laser Treatment



Laser Processing



共筑平台，芯中有光



info@glsun.com



www.glsun.com



Guanglong S&T Zone, No.8 High-tech Industry Park  
Chaoyang Road, Guilin ,Guangxi, China

