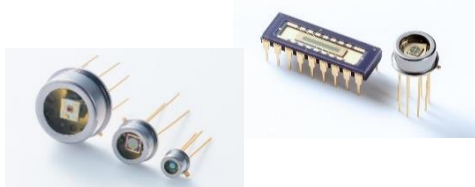


## Company Profile

<b>Company Name</b>	<b>Hamamatsu Photonics K.K.</b>
<b>Location</b>	<b>Hamamatsu, Shizuoka, JAPAN</b>
<b>Established</b>	<b>September 29, 1953</b>
<b>Capital</b>	<b>34,928 Million JPY</b>
<b>Net Sales (FY ended 9/30/2019)</b>	<b>145,912 Million JPY</b>
<b>Number of Employees</b>	<b>3,571</b>

**HAMAMATSU**  
PHOTON IS OUR BUSINESS



## Main Products

### > Photodiode

- InGaAs/Si Photodiode
- SiAPDs/MPPC
- Photo IC
- Phototubes etc.

### > Sensor/Camera

- Image Sensor
- X-Ray Sensor
- Distance & position sensors
- CMOS Camera
- CCD Camera
- InGaAs Camera etc.

### > Systems

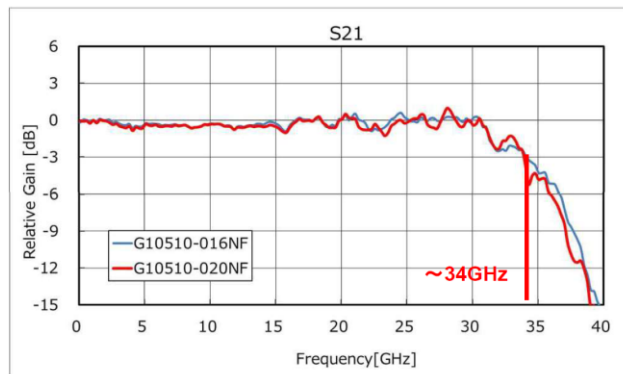
- Life science & medical systems
- Manufacturing support systems
- Photometry systems

etc.

## New Products/Photodiode for 56GB/96GB/130GB

Type	Active Area	Ct Vr=3V	Sensitivity $\Lambda=1.31\text{nm}$	1ch	4ch		
					250um	500um	750um
FT	$\Phi 16$	65fF	0.8A/W	✓	✓	✓	✓
	$\Phi 20$	80fF	0.8A/W	✓	✓	✓	✓
BT	$\Phi 16_{(\text{※1})}$	55fF	0.85A/W	✓	✓	✓	✓
BT-CoC	$\Phi 16_{(\text{※1})}$	75fF <sub>(\text{※2})</sub>	0.85A/W	✓	✓	✓	✓

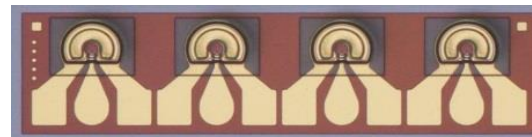
### HPK FT + TIA result



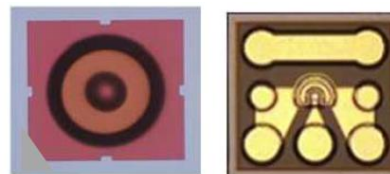
Condition :  
**AGC-mode, Vcc=3.3V, Vpd=3.3V, Vgc=0.7V, Pin=-15dBm**

※1: Actual effective lens diameter is 40um  
 ※2: Including quartz submount Ct

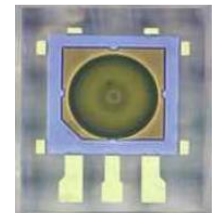
### FT Type



### BT Type



### BT-CoC



### WG Type

**96/130GB 250umP 4ch  
 Underdevelopment**