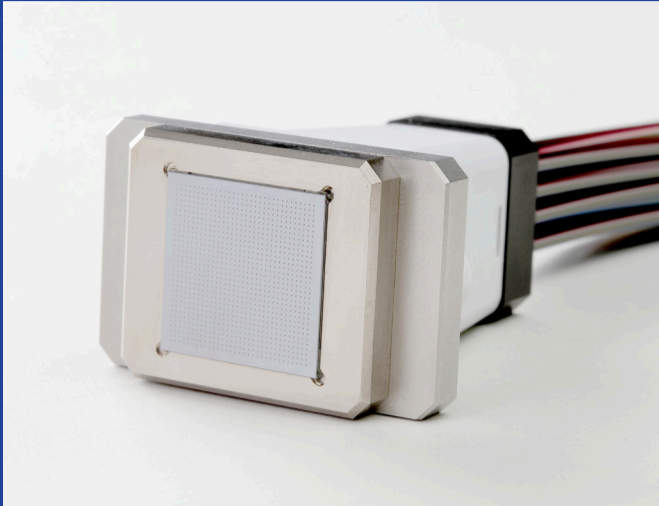
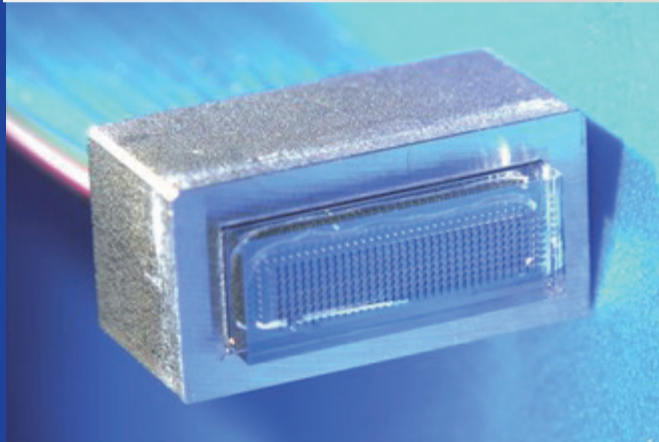


2D Fiber / Collimator Array



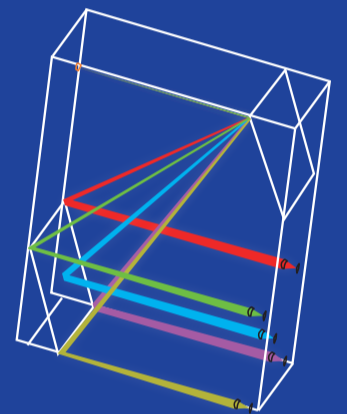
■ 2D Fiber Array General Specifications

- Fiber Type : Φ 125um SMF, MMF
- Pitch : 250um, 500um, 1000um or custom
- Grid Pattern : Rectangular or Hexagon available
- Pitch Tolerance : < 1.0um
- Insertion Loss : < 0.3dB (Typ.)



■ 2D Collimator Array General Specifications

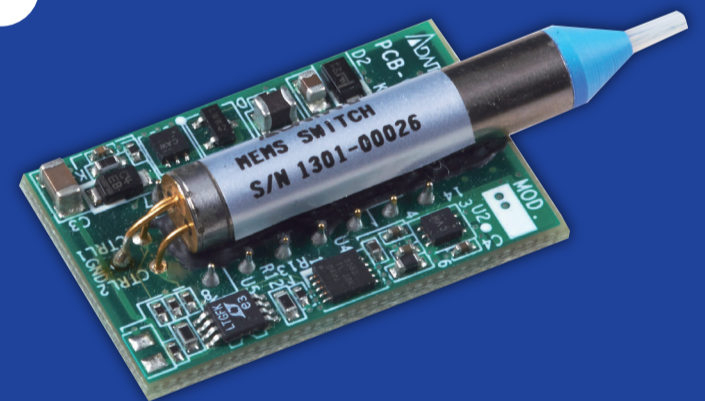
- Lens Diameter : Φ 127um- Φ 1000um
- Lens Material : Glass or Silicon
- Lens Focal Length depends on your optical system requirements



MEMS Products

MEMS Optical Switch with Driver Board

- Switching Channels from 1x2 to 1x16, and more
- SMF, MMF
- Small Module Footprint
- Low Supply Voltage 5V
- Faster Switching Time 0.7ms Typical
- Wavelengths 1530nm to 1570nm (C-Band), 1570nm to 1610nm (L-Band) and 1530nm to 1610nm (C/L Bands)



Compact Variable Optical Attenuator

- Attenuation Type Bright / Dark
- Attenuation Range 30dB min (Bright), 40dB (Dark)
- Response Speed 1ms max (Typical 0.4ms)
- Optical Power Handling 500mW
- Drive Voltage 5VDC (Bright) / 6VDC (Dark)
- Wavelengths 1530nm to 1570nm (C-Band), 1570nm to 1610nm (L-Band) and 1530nm to 1610nm (C/L Bands)

