

# Optical Transceiver Solution For Data Center

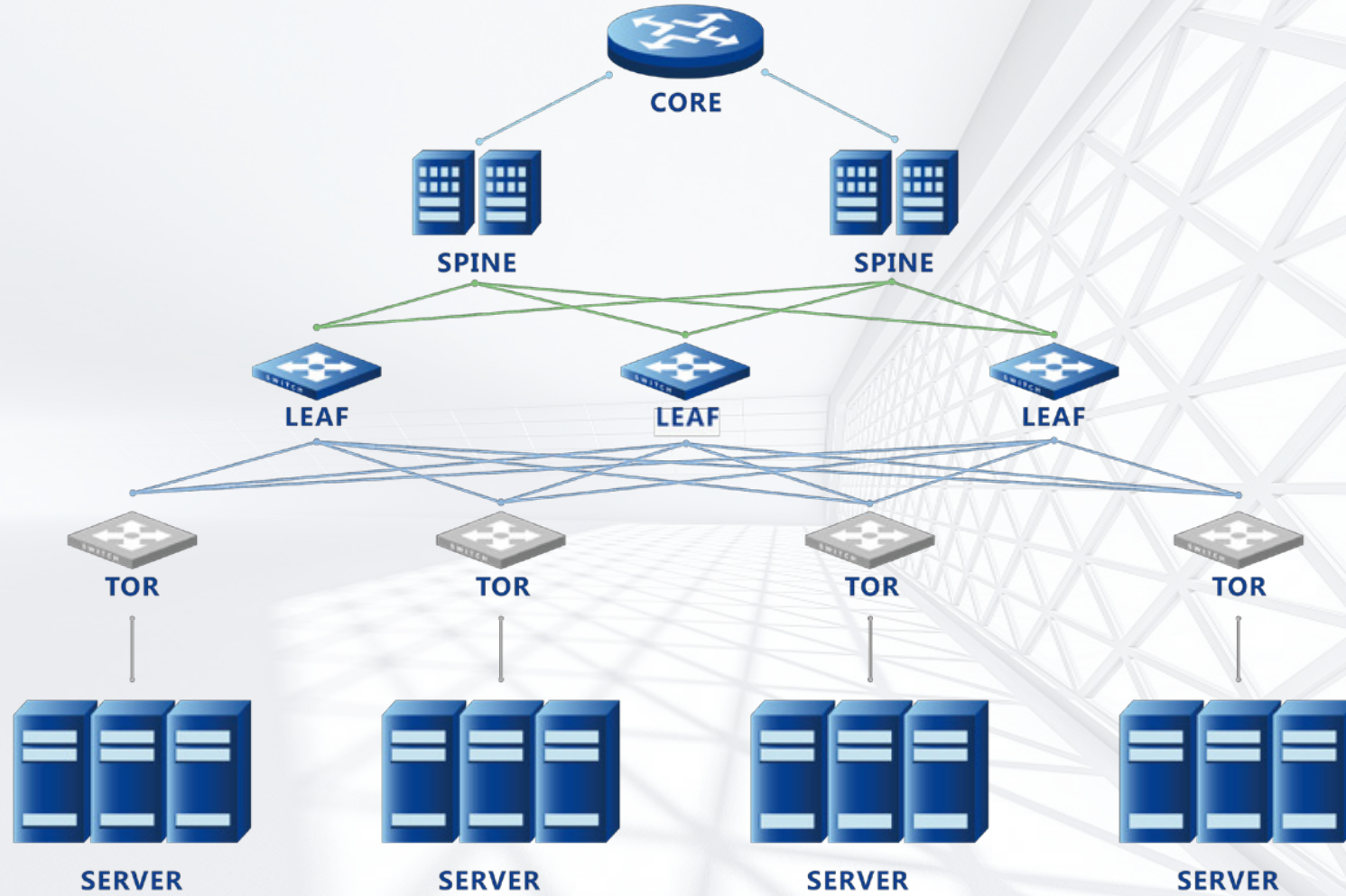
# 01

***DATA  
CENTER  
HIGH  
SPEED  
SOLUTION***

...

The AcceLink logo is positioned in the top right corner of the image. It features the word "AcceLink" in a bold, sans-serif font. The "Acce" part is blue, and the "Link" part is red. The logo is set against a background of light blue, angular, geometric shapes that create a sense of depth and movement, resembling a stylized data center or a modern architectural structure.

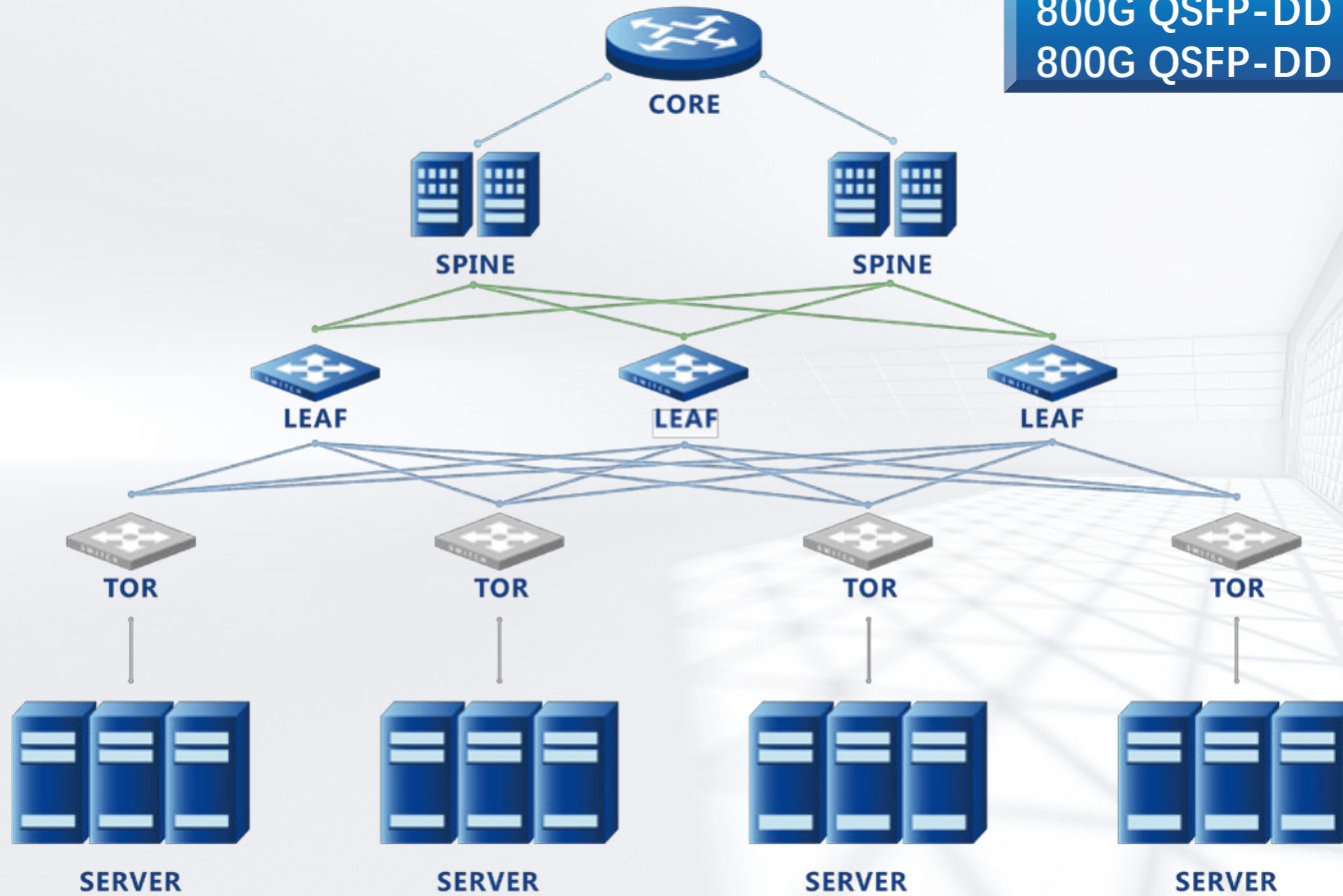
# OPTICAL TRANSCEIVER SOLUTION FOR DATA CENTER



# OPTICAL TRANSCEIVER SOLUTION FOR DATA CENTER



800G OSFP 2X400G FR4  
800G QSFP-DD DR8  
800G QSFP-DD 2X400G FR4



400G OSFP 2X200G FR4  
400G OSFP SR8  
400G QSFP-DD FR4  
400G QSFP-DD DR4  
400G QSFP-DD SR8

200G QSFP56 FR4  
200G QSFP56 SR4

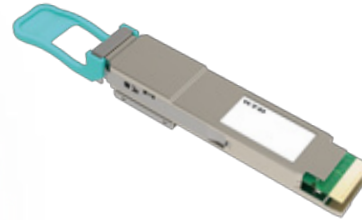
100G DSFP AOC  
56G SFP56 SR

# DATA CENTER HIGH SPEED SOLUTION



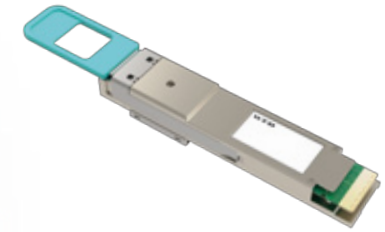
## 800G OSFP 2X400G FR4

- ✓ OSFP form-factor
- ✓ 800GE Ethernet links



## 800G QSFP-DD DR8

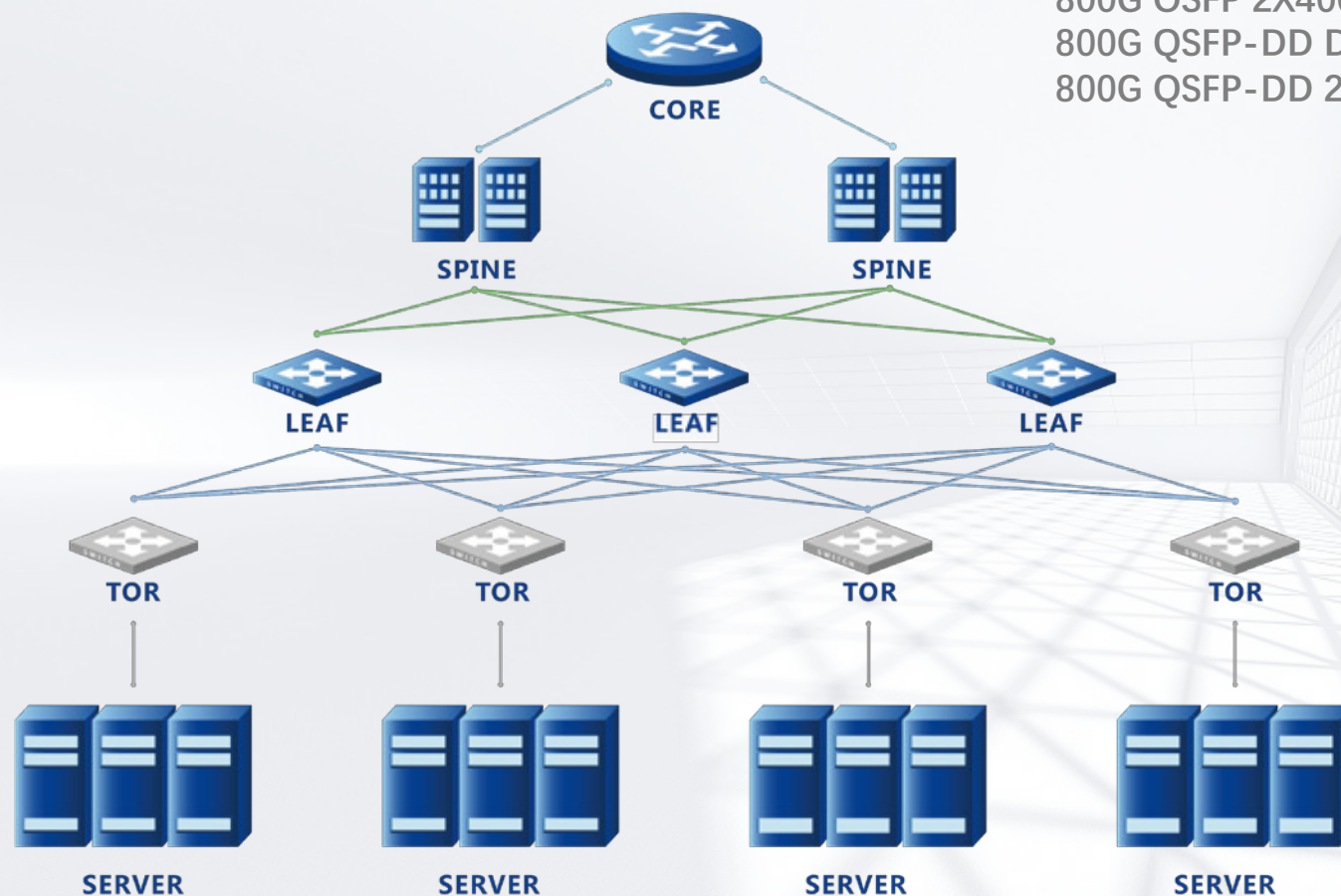
- ✓ QSFP-DD form-factor
- ✓ 800GE Ethernet links



## 800G QSFP-DD 2X400G

- ✓ QSFP-DD form-factor
- ✓ 800GE Ethernet links

# OPTICAL TRANSCEIVER SOLUTION FOR DATA CENTER



800G OSFP 2X400G FR4  
800G QSFP-DD DR8  
800G QSFP-DD 2X400G FR4

400G OSFP 2X200G FR4  
400G OSFP SR8  
400G QSFP-DD FR4  
400G QSFP-DD DR4  
400G QSFP-DD SR8

200G QSFP56 FR4  
200G QSFP56 SR4

100G DSFP AOC  
56G SFP56 SR

# DATA CENTER HIGH SPEED SOLUTION



## 400G OSFP 2X200G FR4

- ✓ OSFP form-factor
- ✓ 400GE Ethernet links
- ✓ Power consumption <13W



## 400G OSFP SR8

- ✓ OSFP form-factor
- ✓ 400GE Ethernet links
- ✓ Power consumption <10W



## 400G QSFP-DD FR4

- ✓ QSFP-DD form-factor
- ✓ Support 400GBASE-FR4 Ethernet
- ✓ Power consumption <8W



## 400G QSFP-DD DR4

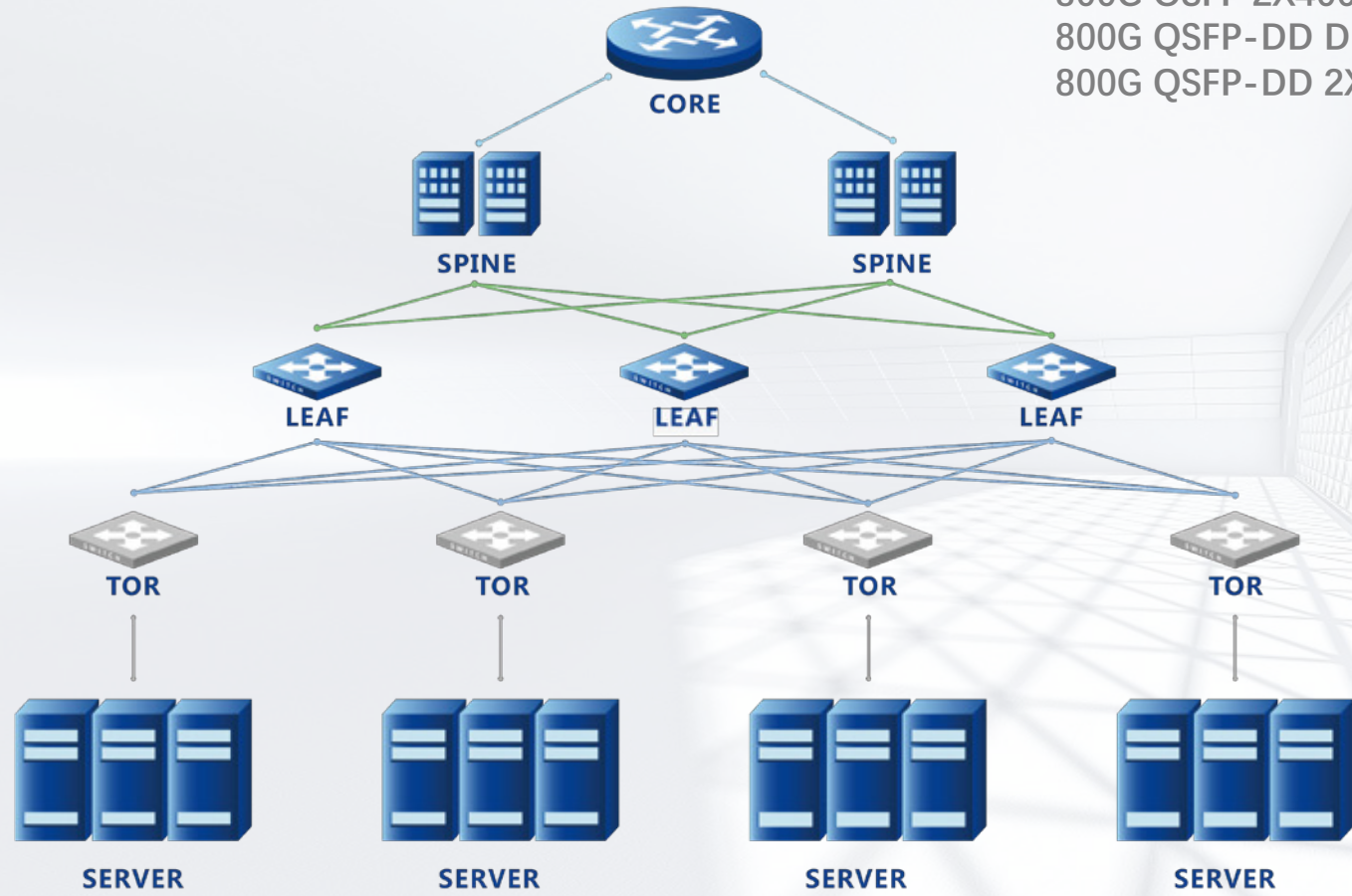
- ✓ QSFP-DD form-factor
- ✓ Support 400GBASE-DR4 Ethernet
- ✓ Both SiP & EML Solution



## 400G QSFP-DD SR8

- ✓ QSFP-DD form-factor
- ✓ Support 400GBASE-SR8 Ethernet
- ✓ Power consumption <10W

# OPTICAL TRANSCEIVER SOLUTION FOR DATA CENTER



800G OSFP 2X400G FR4  
800G QSFP-DD DR8  
800G QSFP-DD 2X400G FR4

400G OSFP 2X200G FR4  
400G OSFP SR8  
400G QSFP-DD FR4  
400G QSFP-DD DR4  
400G QSFP-DD SR8

**200G QSFP56 FR4**  
**200G QSFP56 SR4**

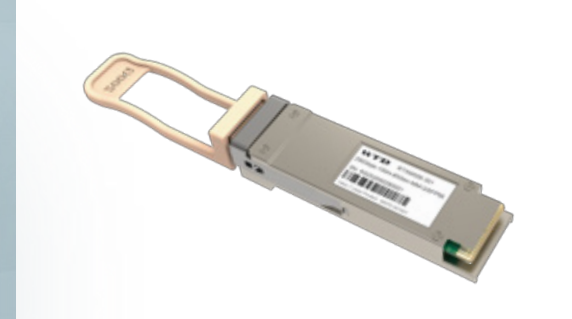
100G DSFP AOC  
56G SFP56 SR





## 200G QSFP56 FR4

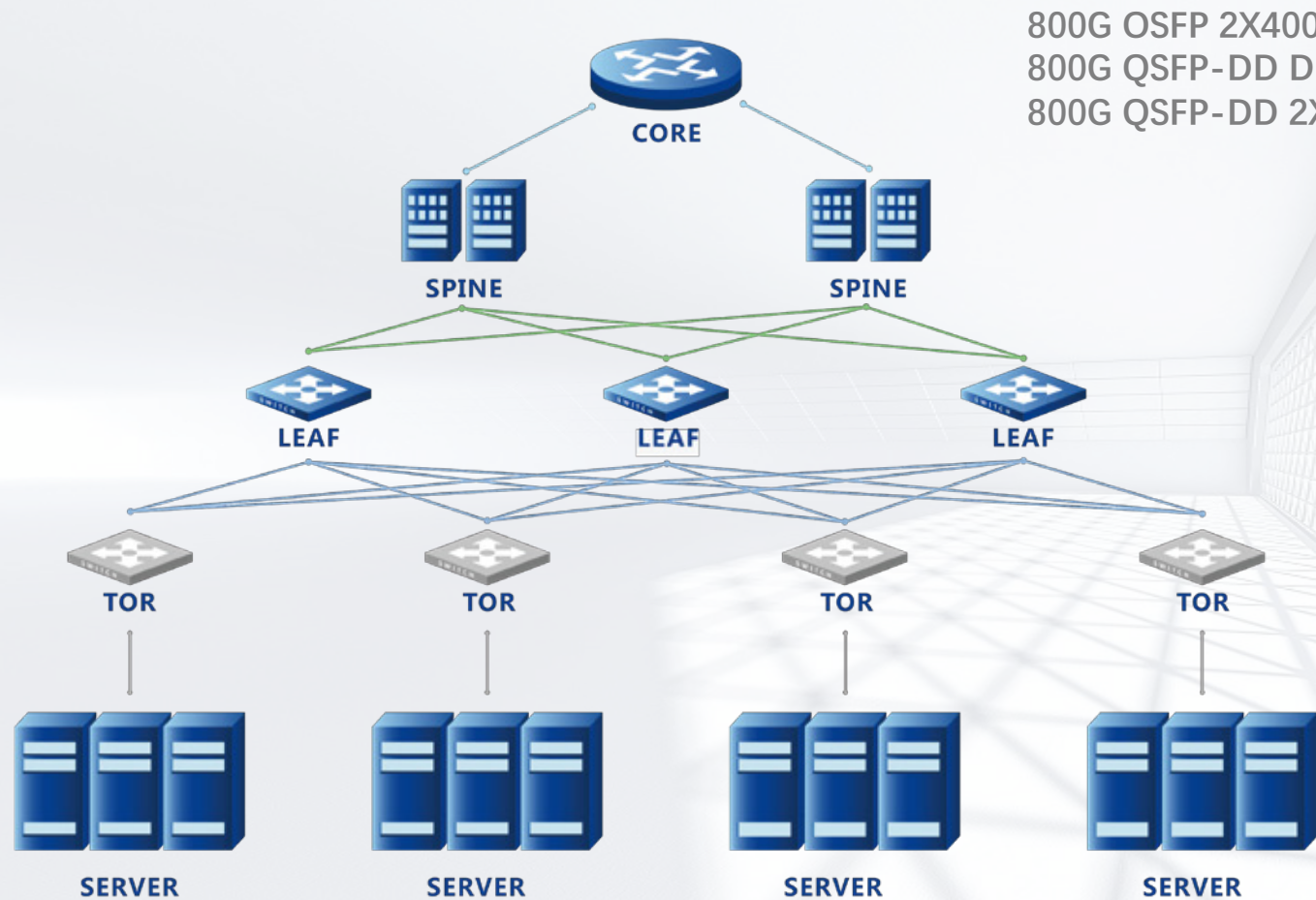
- ✓ QSFP56 form-factor
- ✓ 200GE Ethernet links
- ✓ Power consumption <6W



## 200G QSFP56 SR4

- ✓ QSFP56 form-factor
- ✓ 200GE Ethernet links
- ✓ Power consumption <5W

# OPTICAL TRANSCEIVER SOLUTION FOR DATA CENTER

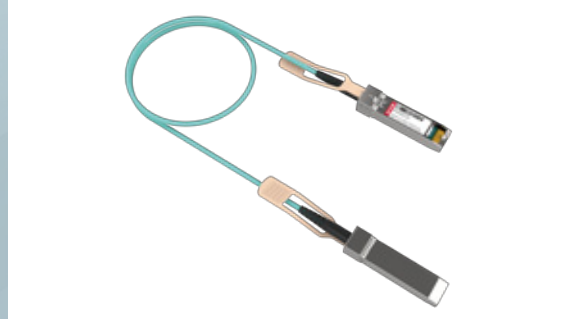


800G OSFP 2X400G FR4  
800G QSFP-DD DR8  
800G QSFP-DD 2X400G FR4

400G OSFP 2X200G FR4  
400G OSFP SR8  
400G QSFP-DD FR4  
400G QSFP-DD DR4  
400G QSFP-DD SR8

200G QSFP56 FR4  
200G QSFP56 SR4

100G DSFP AOC  
56G SFP56 SR



## 100G DSFP AOC

- ✓ DSFP form-factor
- ✓ 100GE Server & TOR links
- ✓ Based on CDR solution
- ✓ Power consumption <2.5W per end



## 56G SFP56 SR

- ✓ SFP56 form-factor
- ✓ 50GE Server & TOR links
- ✓ Both DSP&CDR solution
- ✓ Power consumption <1.5W

THANKS