

# Optical Transceiver Solution For Access

# CONTENT

PART 1

**FTTx  
SOLUTION**

PART 2

**5G  
SOLUTION**

# 01

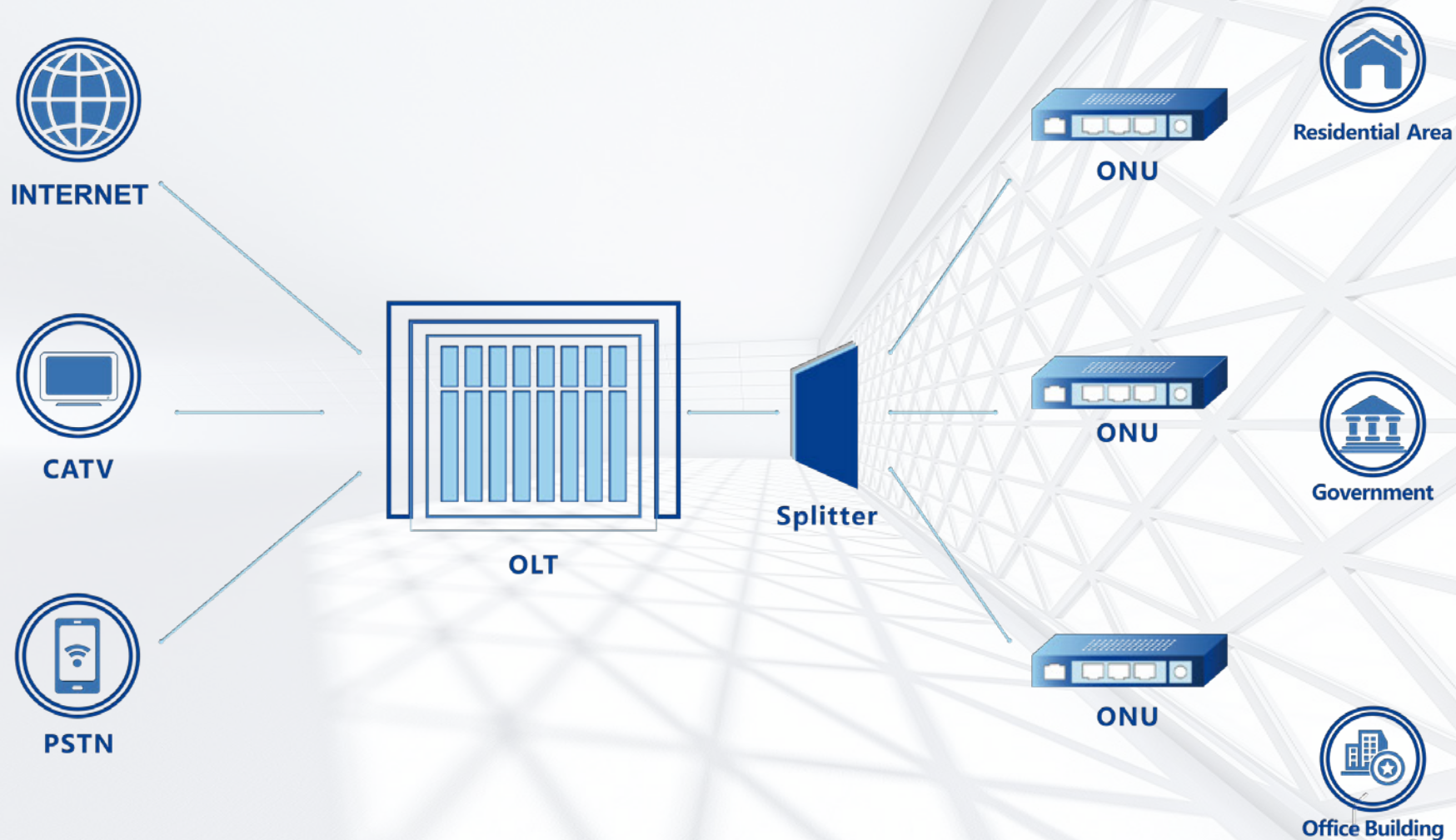
## ***FTTx SOLUTION***

...

The logo for AcceLink, featuring the word "AcceLink" in a stylized font. "Acce" is in blue and "Link" is in red, both with a white outline. The background of the slide is a 3D-rendered architectural scene with light blue and white geometric shapes, creating a sense of depth and modernity.

**AcceLink**

# OPTICAL TRANSCEIVER SOLUTION FOR FTTx



# OPTICAL TRANSCEIVER SOLUTION FOR FTTx



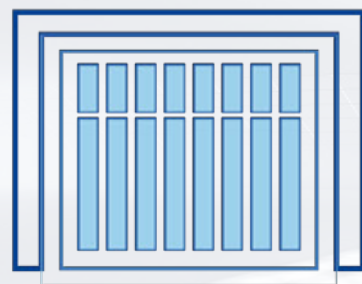
INTERNET



CATV



PSTN



OLT

**GPON/10G OLT**



Splitter



ONU



Residential Area



ONU



Government



ONU



Office Building

GPON/10G BOSA

GPON/10G ONU



## 10G EPON OLT SFP+

**Application:** Optical transceiver for 10G&1G/ 10 & 1G symmetric EPON OLT

- ✓ Distance: 20km
- ✓ Temperature: 0~70°C/ -40~85°C



## XGS OLT SFP+

**Application:** Optical transceiver for XGSPON OLT

- ✓ Distance: 20km/30km
- ✓ Temperature: 0~70°C/-40~85°C



## XG Combo SFP+

**Application:** Optical transceiver for XGPON & GPON OLT side

- ✓ Distance : 20km
- ✓ Temperature : 0~70°C

## XGS Combo SFP+

**Application:** Optical transceiver for XGSPON & GPON OLT side

- ✓ Distance: 20km
- ✓ Temperature: 0~70°C

# OPTICAL TRANSCEIVER SOLUTION FOR FTTx



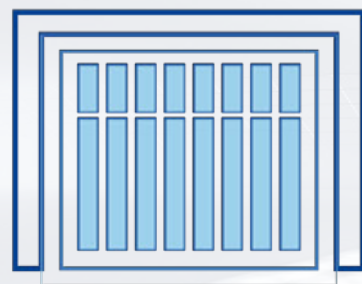
INTERNET



CATV



PSTN



OLT

GPON/10G OLT



Splitter



ONU



Residential Area

GPON/10G BOSA



ONU



Government

GPON/10G ONU



ONU



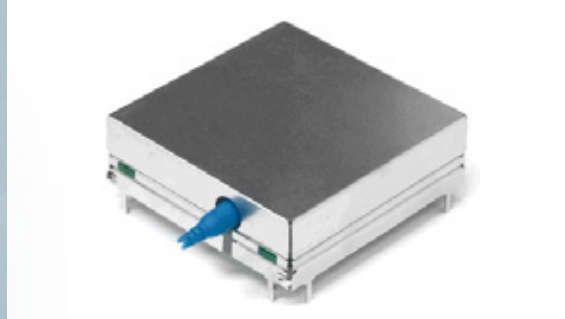
Office Building



## 10G BOSA

**Application:** 10G  
Asymmetric/Symmetric EPON,  
XGPON/ XGSPON optical  
transceiver at ONU side

Distance: 20km  
Temperature: 0~70°C/-40~85°C  
Wavelength: Tx: 1270nm Rx: 1577nm  
Fiber Connector: SC/UPC



## 10G Triplex SFF

**Application:** GPON ONU Side,  
Voice/Data/Video FTTx

Distance: 20km  
Temperature: -40~85°C  
RF Connector: 3 PIN Connector  
Frequency Range: 45~1002MHz



## 10G ONU SFP+

**Application:** Optical transceiver  
for 10G Asymmetric/Symmetric  
EPON, XGPON/XGSPON ONU

Distance: 20km  
Temperature: -40~85°C  
Wavelength: Tx: 1270/1310nm  
Rx:1577nm



**02**

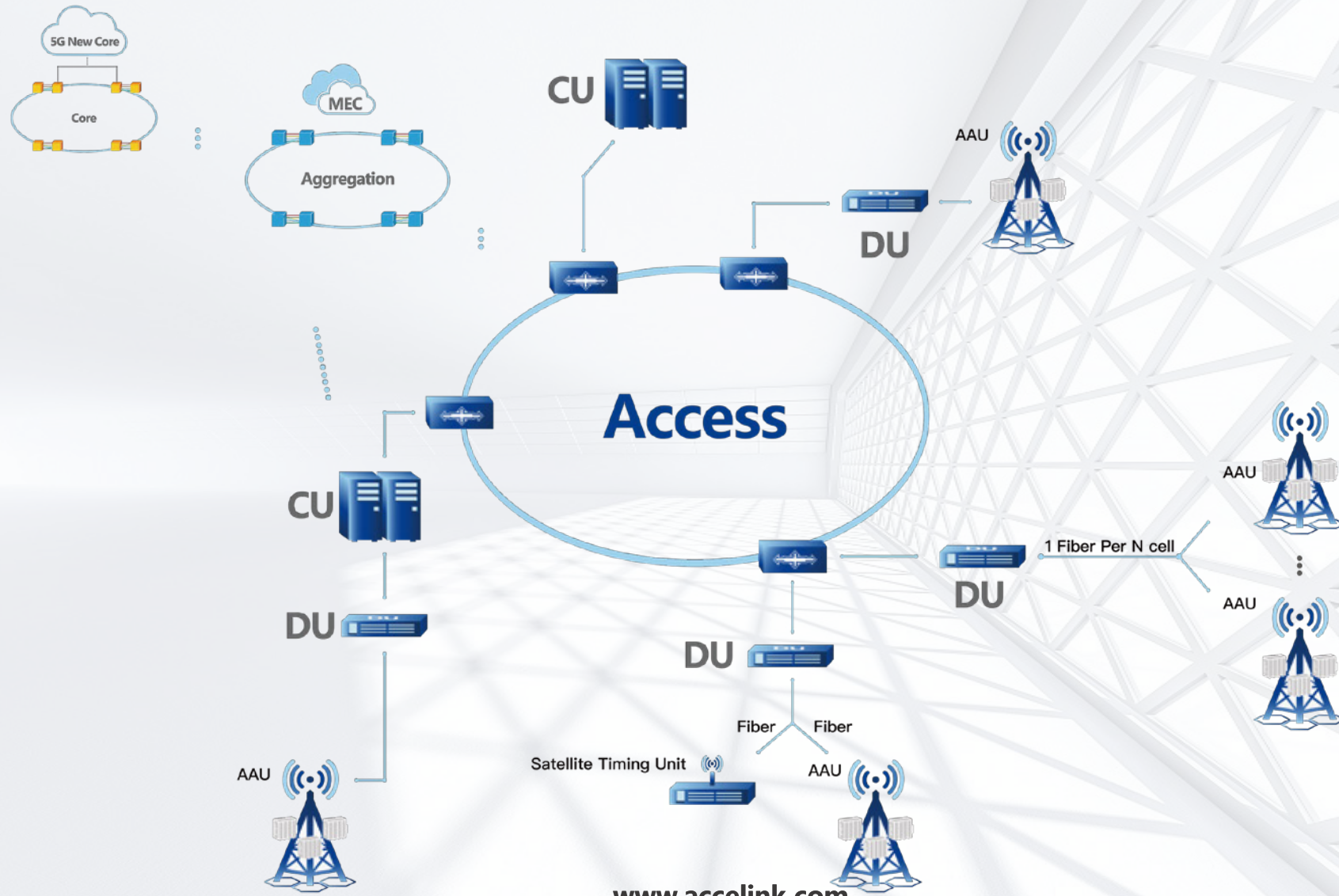
***5G  
SOLUTION***

...

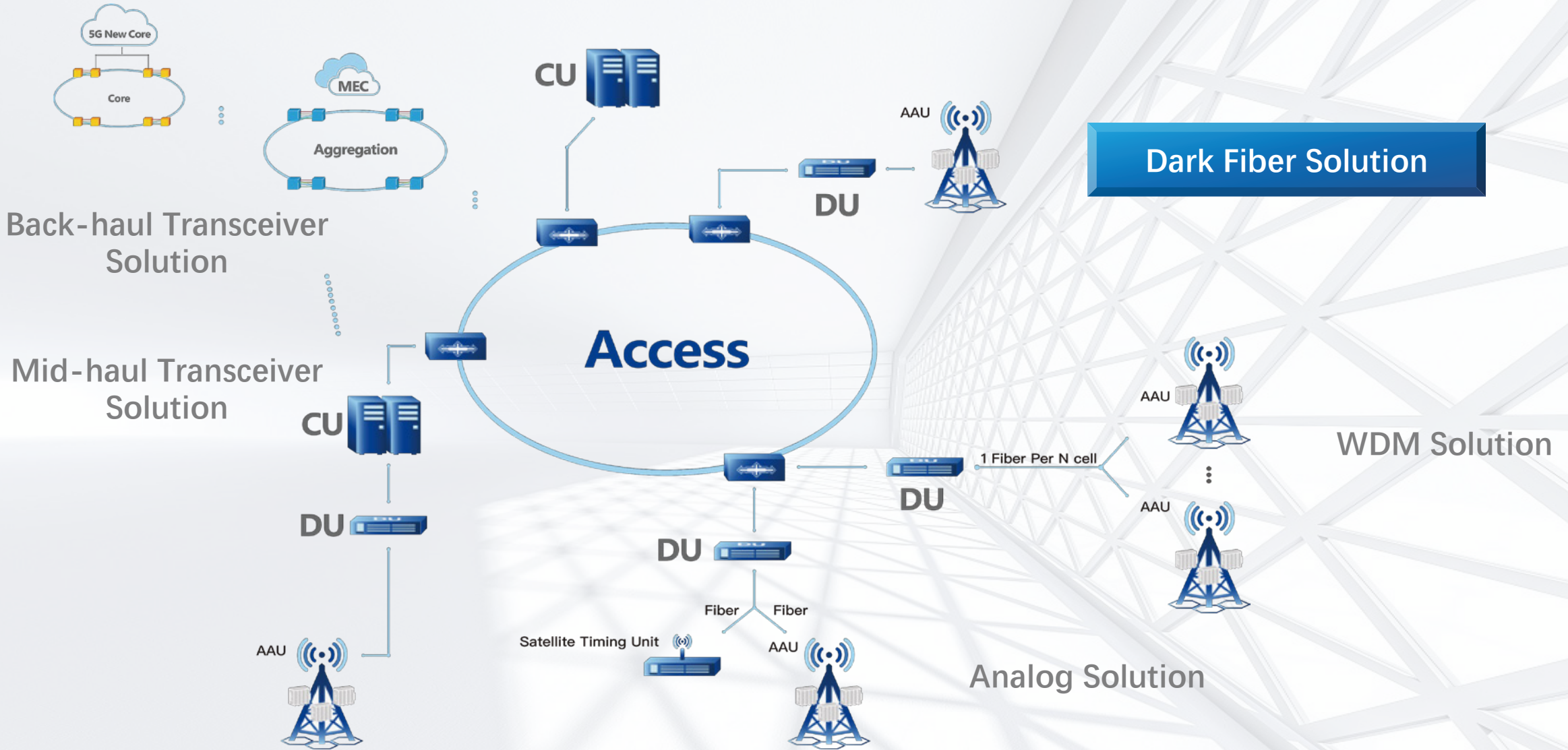
**Accelink**



# OPTICAL TRANSCEIVER SOLUTION FOR 5G



# OPTICAL TRANSCEIVER SOLUTION FOR 5G





## 10G SFP+

**Application:**  
10GBASE-LR/LW, 10G Ethernet, 8G/10GFC, CPRI Option 3, 5, 6, 7  
**Distance:** 2/10/20/30km  
**Temperature:** -40~85°C  
**Wavelength:** 1310nm  
**Power Consumption:** <1W



## 10G SFP+ Bidi

**Application:**  
10GBASE-LR/LW, 10G Ethernet, OBSAI rates 3.072 Gb/s, 6.144Gb/s, CPRI Option 3, 5, 6, 7  
**Distance:** 10/20/30/40km  
**Temperature:** -40~85°C  
**Wavelength:** 1270/1330nm  
**Power Consumption:** <1W, <1.2W(40km)



## 25G SFP28

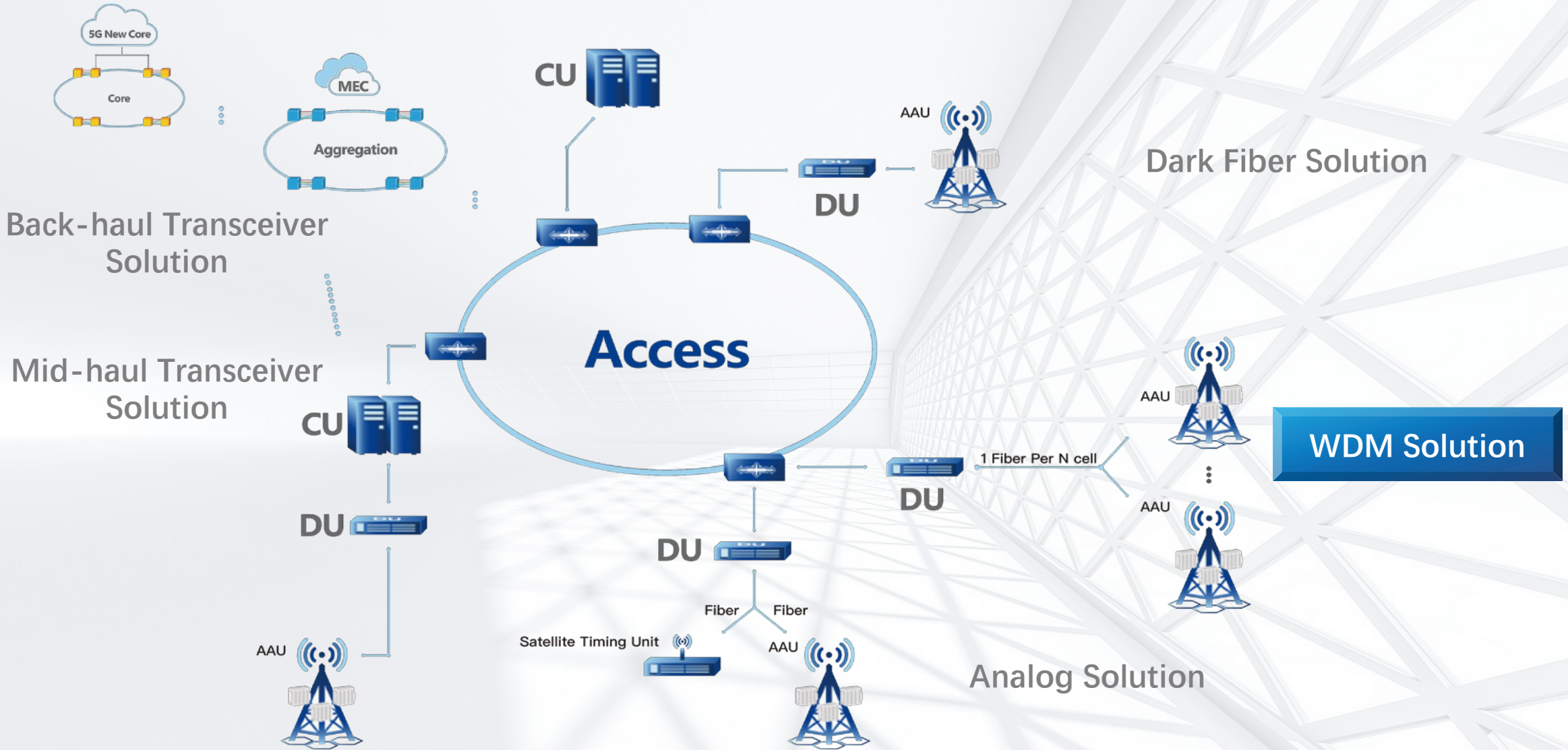
**Application:** 25G/10G CPRI Wireless: 25G eCPRI  
Wireless/Ethernet, 10G Ethernet  
**Distance:** 0.3/2/10/20km  
**Temperature:** -40~85°C  
**Wavelength:** 1310nm  
**Power Consumption:** <1W



## 25G SFP28 Bidi

**Application:** 25G/10G CPRI Wireless, 25G eCPRI  
Wireless/Ethernet, 10G Ethernet  
**Distance:** 10/20/30km  
**Temperature:** -40~85°C  
**Wavelength:** 1270/1330nm, 1270/1310nm  
**Power Consumption:** <1.2W

# OPTICAL TRANSCEIVER SOLUTION FOR 5G



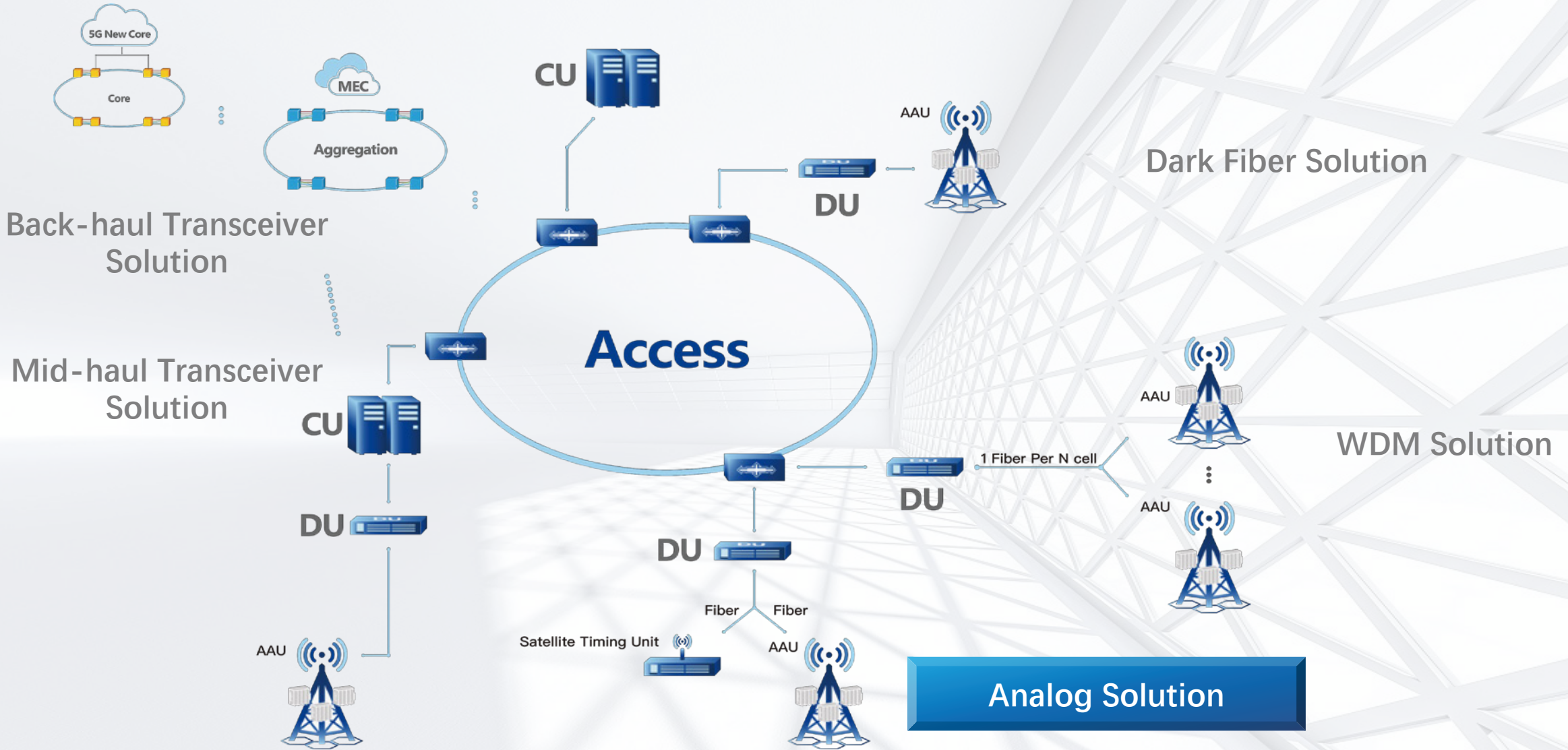


## 25G SFP28 CWDM6/MWDM12/LWDM12/DWDM48 10km

Application: 25G/10G CPRI Wireless, 25G eCPRI Wireless/Ethernet, 10G Ethernet

	CWDM6	MWDM12	LWDM12	DWDM
Distance	10km	10km	10/20km	10km
Temperature	-20 ~ 85°C	-40~85°C	-40~85°C	-40~85°C
Power Consumption	1W	1.8W	1.8W	2W

# OPTICAL TRANSCEIVER SOLUTION FOR 5G



## **GPS RoF**

Application: Transmitting satellite timing signals between antenna and BBU

- ✓ **Distance: 10km**
- ✓ **Temperature: -40~85°C**
- ✓ **Navigation System Supported: BDS/GPS**

## **6Ghz 2T2R RoF**

Application: Indoor smallcell scenarios, double BOSA

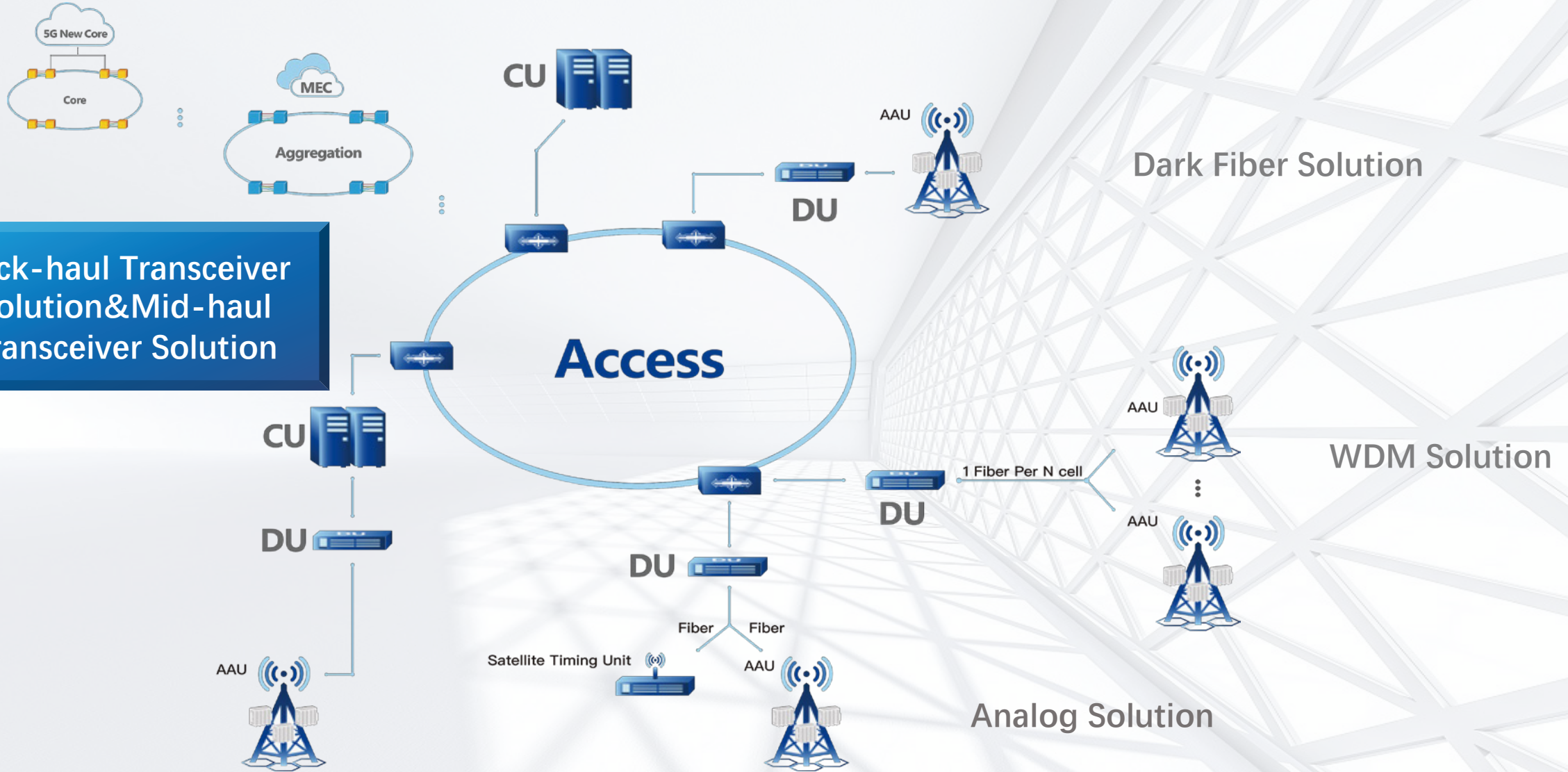
- ✓ **Distance: 10km**
- ✓ **Temperature: -40~85°C**
- ✓ **Wavelength: 1270/1330nm**



# OPTICAL TRANSCEIVER SOLUTION FOR 5G



Back-haul Transceiver Solution & Mid-haul Transceiver Solution



# MID-HAUL & BACK-HAUL SOLUTION NON



## 50G QSFP28

**Application:**  
5G Mid-haul

**Distance:** 10/40km

**Temperature:** 0~70°C

**Wavelength:** 1310nm

**Power Consumption:**

<3W(10km),

<3.5W(40km)



## 50G QSFP28 Bidi

**Application:**  
5G Mid-haul

**Distance:** 10/40km

**Temperature:** 0~70°C

**Wavelength:**

1270/1330nm(10km),

1289/1314nm(40km)

**Power Consumption:**

<3W(10km),

<3.5W(40km)



## 100G QSFP28

**Application:**  
5G Back-haul  
100G BASE-LR4/ER4/ZR4  
OUT4

**Distance:** 10/40/80km

**Temperature:** 0~70°C

**Wavelength:** LWDM

**Power Consumption:**

<4W(10km), <6W(40km)

<6W(80km)



## 200G QSFPDD

**Application:**  
5G Back-haul  
200G BASE-LR4/ER4

**Distance:** 10/40km

**Temperature:** 0~70°C

**Wavelength:** LWDM

**Power Consumption:**

<9W(10km), <9W(40km)

THANKS