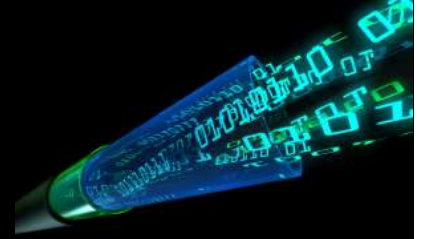


## Portable optical Transceiver Checker



**i-COWORKS**

[www.icoworks.co.kr](http://www.icoworks.co.kr)

Tel : +82-40-824-7283

Fax : +82-40-824-7284

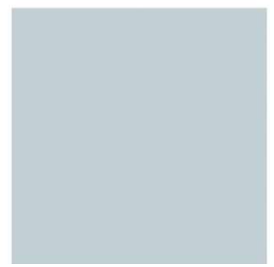
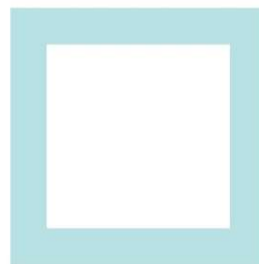
[sales@icoworks.co.kr](mailto:sales@icoworks.co.kr)

### Description

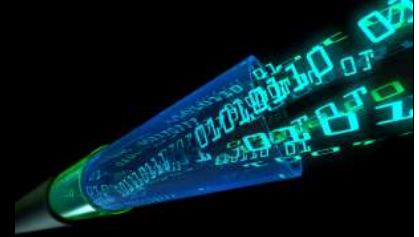
- Optical Transceiver Evaluation & Verification.
- Help to quick verify optical transceiver performance.
- Portable optical Transceiver Checker is field diagnostic Product for optical transceivers operator, installation and maintenance with compact, easy operation.



CC-Q2CS2C-X



## Portable optical Transceiver Checker

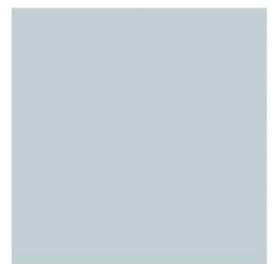
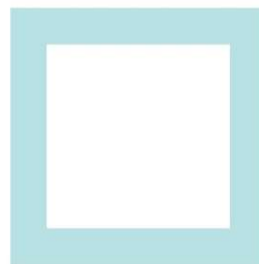


### Features

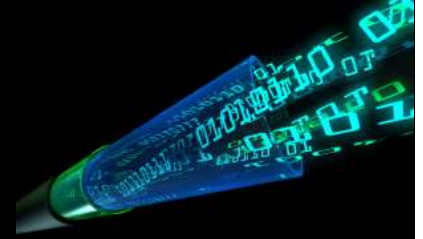
- Checking SFP Transceiver and QSFP Transceiver
- Available to check SFP/QSFP TX & RX power level (LCD Display)
- Available to check SFP/QSFP Bit-Rate (LCD Display)
- Available to check SFP/ QSFP Tx Wavelength (LCD Display)
- Compact Size and Easy operation
- Connects to a standard PC / laptop via USB connection for complete
- Serial ID Read for standard SFP transceiver
- DC 5V supply voltage

### Application

- Installation & maintenance of optical communication network.
- Simple optical power measurements
- Checking SFP or bidirectional SFP module operation
- Checking QSFP module operation



## Portable optical Transceiver Checker

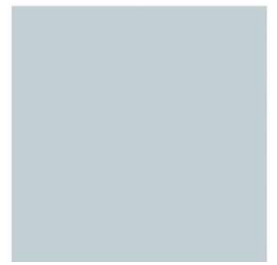


### Absolute Maximum Ratings

Parameters	Symbol	Min	Max.	Units	Conditions
Operating Temperature	Tc	0	70	°C	Case
Storage Temperature	Tstg	-10	+75	°C	Ambient
Relative Humidity	RH	5	95	%	

### ELECTRICAL CHARACTERISTICS

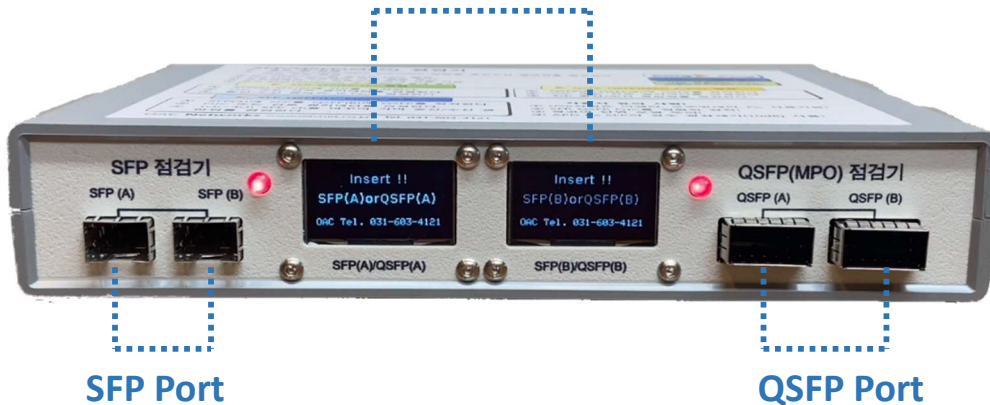
Parameters	Values				Conditions
	Min.	Typ.	Max	Units	
Power Supply		5		V	DC
Power Consumption		1		W	



## Portable optical Transceiver Checker



### SFP/QSFP Transceiver Information



- **Checking the SFP to the SFP Transceiver (LC-LC OJC)**  
1-channel bidirectional transmit/receive optical power, Tx fault, LC-LC OJC Loss
- **Checking the QSFP to the QSFP Transceiver (MPO-MPO OJC)**  
4-channel bidirectional transmit/receive optical power, MPO-MPO OJC Loss
- **Checking the QSFP to the QSFP Transceiver (MPO-LC OJC)**  
4-channel bidirectional transmit/receive optical power, MPO-LC/PC Breakout OJC