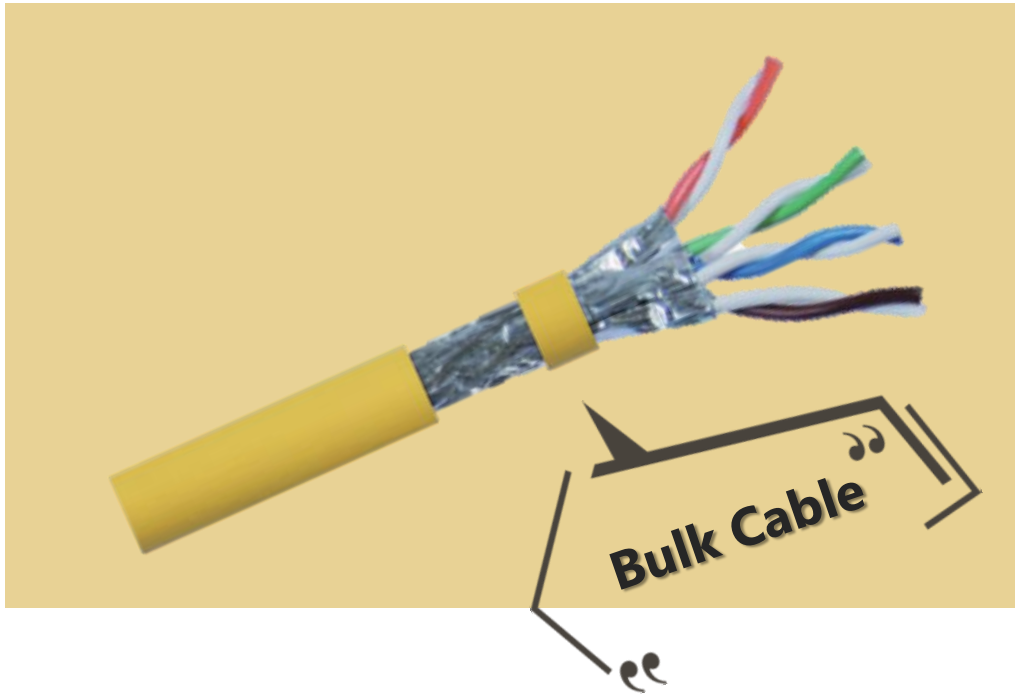


Cat.8 GHMT verified Solution

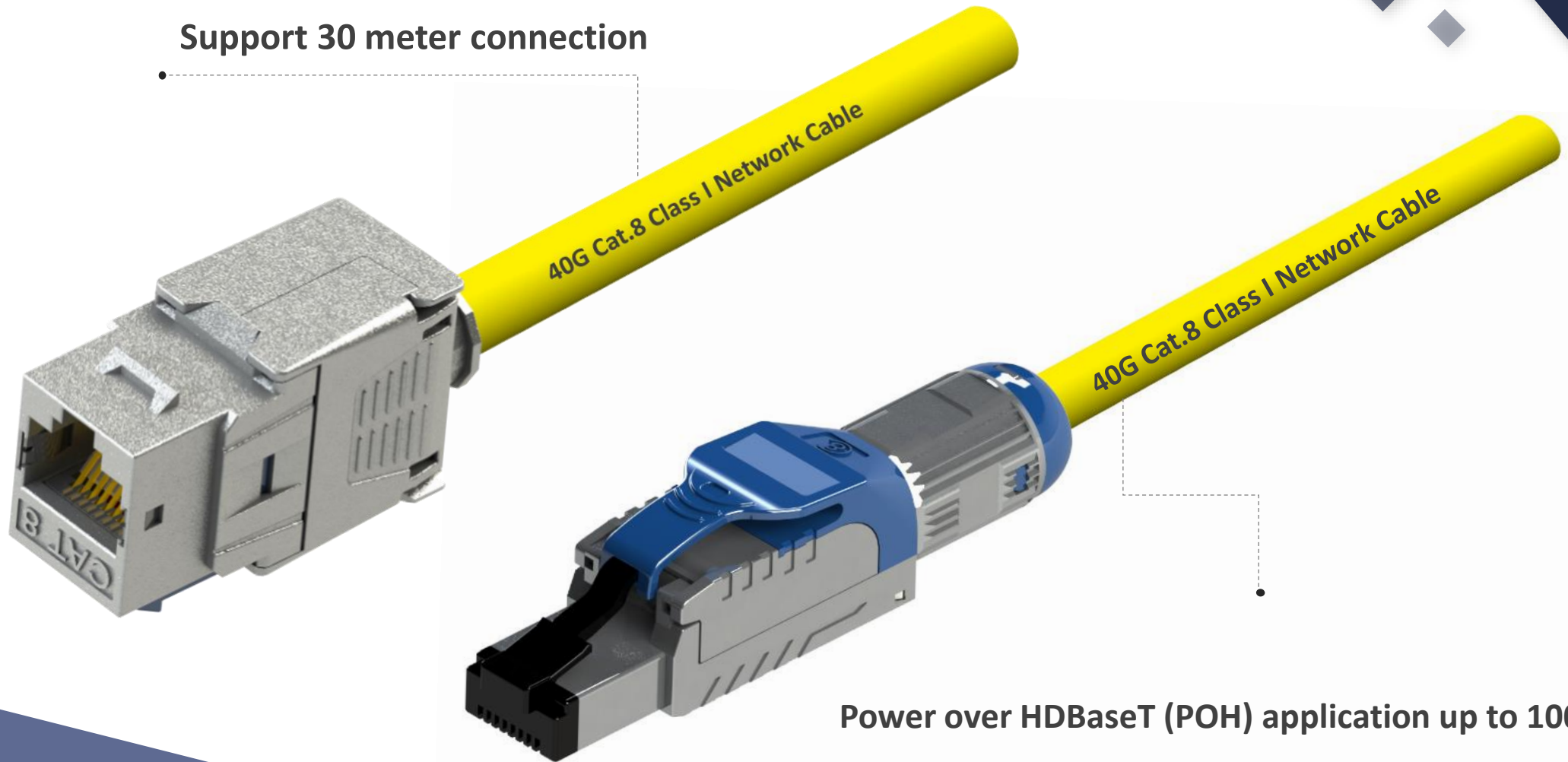
Ready For Infinite Speed C.8

Cat.8 Ethernet Bulk Cable



Item	Detail
Application	Indoor
Type Of Cabling	Copper Solution
Product Name	C8 Bulk Cable
Twisted Pair	S/FTP

Support 30 meter connection



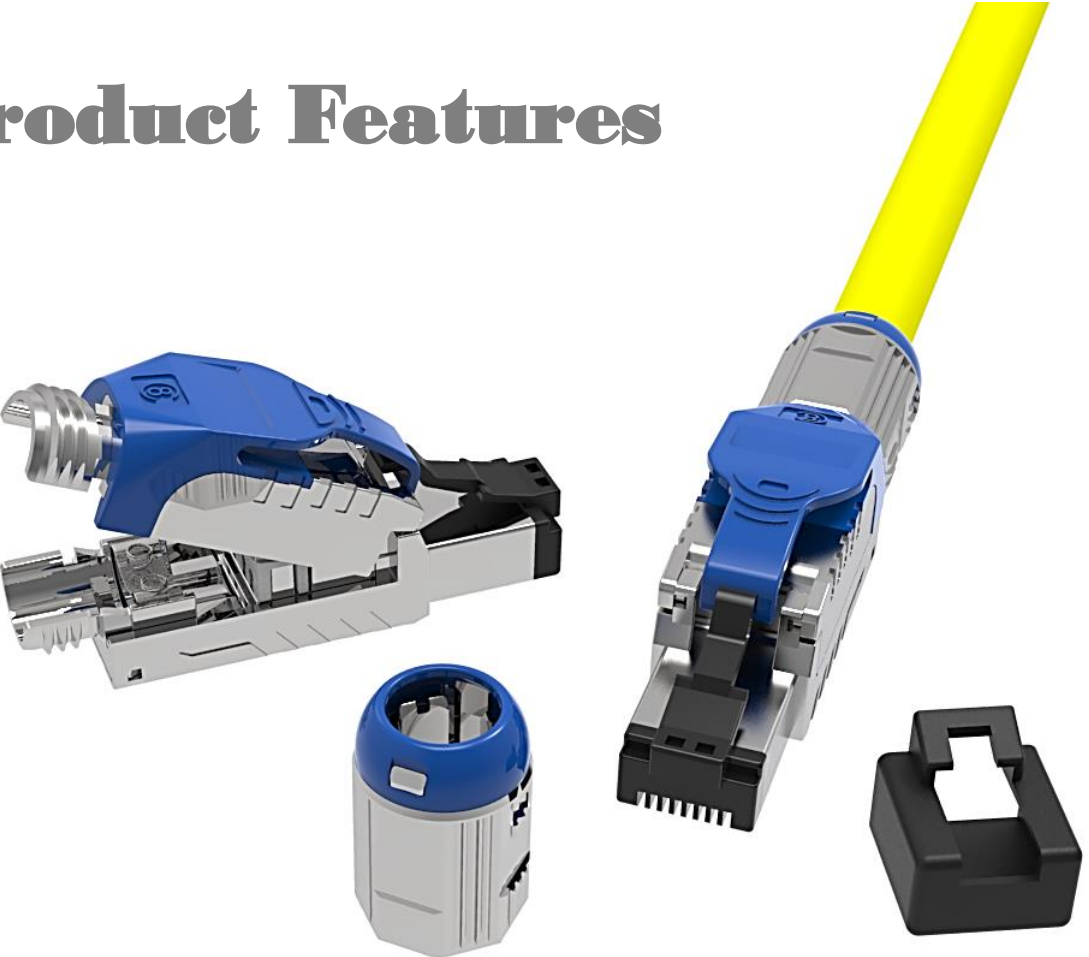
Power over HDBaseT (POH) application up to 100 watts
CM, LSZH, and CM-LSZH dual rated jacket available

Cat.8 FTP Field Termination Tool-Free Plug



Item	Detail
Application	Indoor
Type Of Cabling	Copper Solution
Product Name	Keystone Jack
Twisted Pair	S/FTP, U/FTP, FTP

Product Features

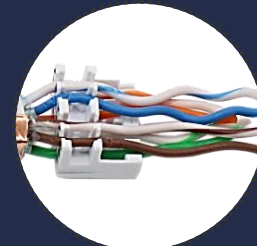


Premium
High
Performance

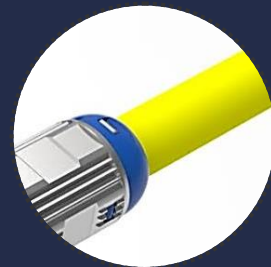
C8 STP Toolless RJ45



Max. OD 8.5mm



**T568A / T568B
Wiring schemes**

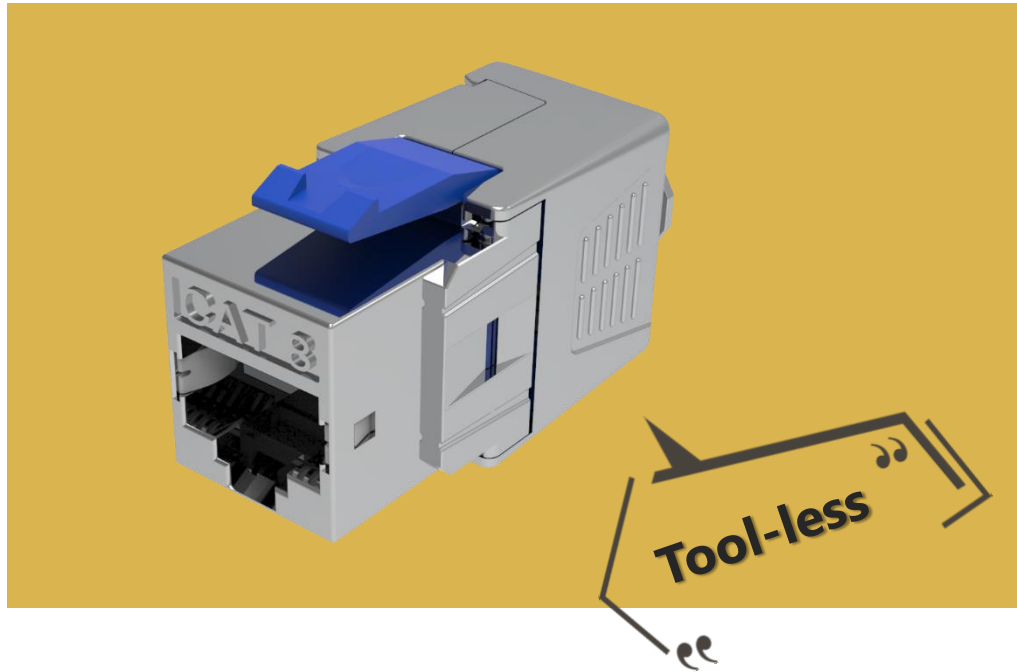


**Support
22-24 AWG**



**No crimping
required**

Cat.8 STP Tooless RJ45 Connector



Item	Detail
Application	Indoor
Type Of Cabling	Copper Solution
Product Name	STP Tool-less RJ45 Connector
Twisted Pair	S/FTP, FTP, U/FTP

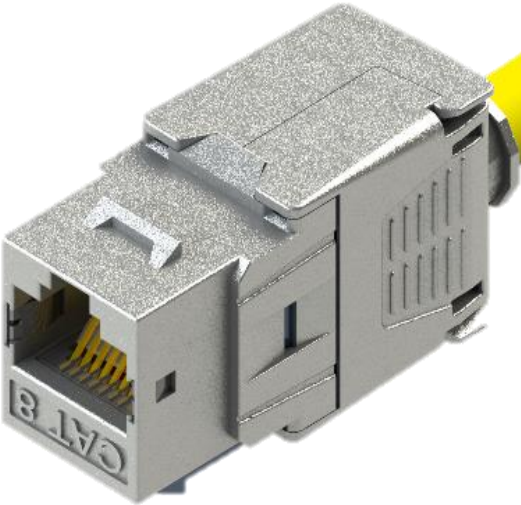
Product Features

Support 22-24AWG S/FTP Solid Cable

Easy to disassembly from panel



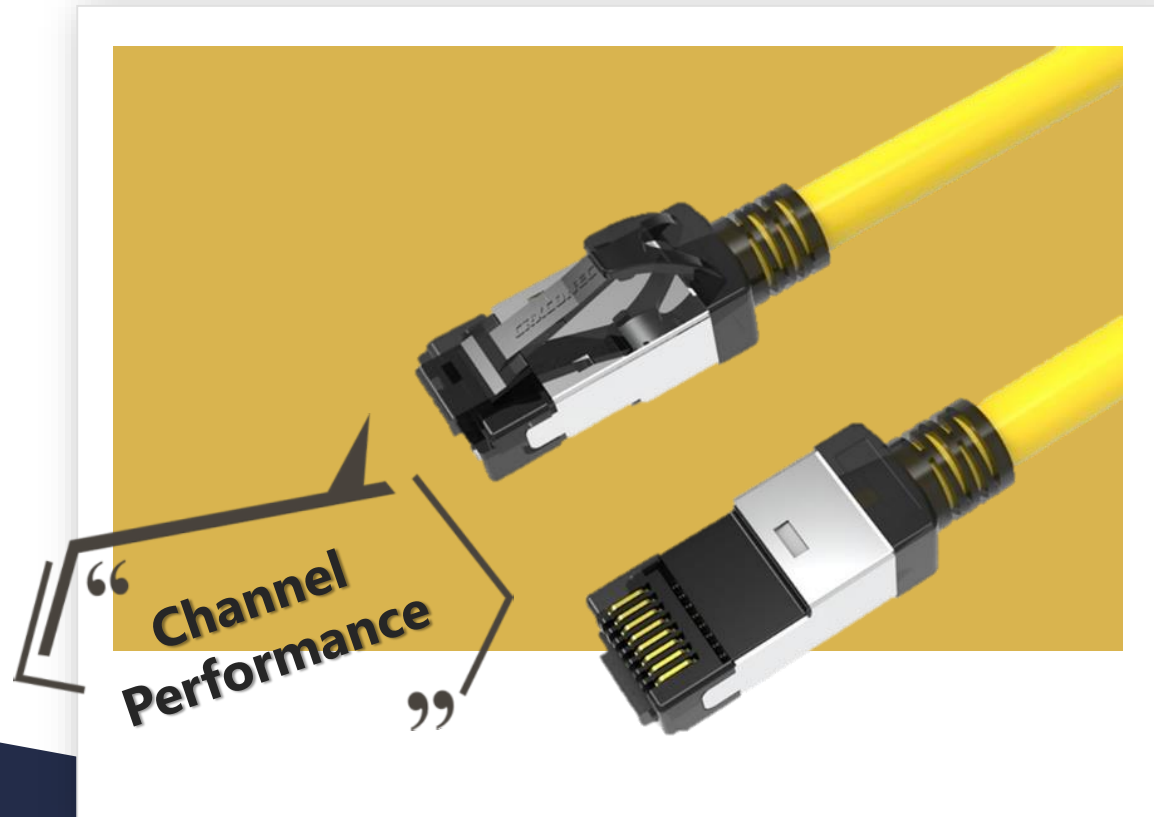
Zinc alloy housing



40G Cat.8 Class I Network Cable

Slim design for high-density panel

Cat.8 STP RJ45 8p8c Copper Patch Cord

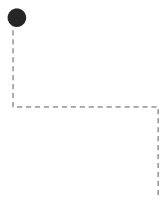


Item	Detail
Application	Indoor
Type Of Cabling	Copper Solution
Product Name	Patch Cord Ethernet Cable
Twisted Pair	S/FTP

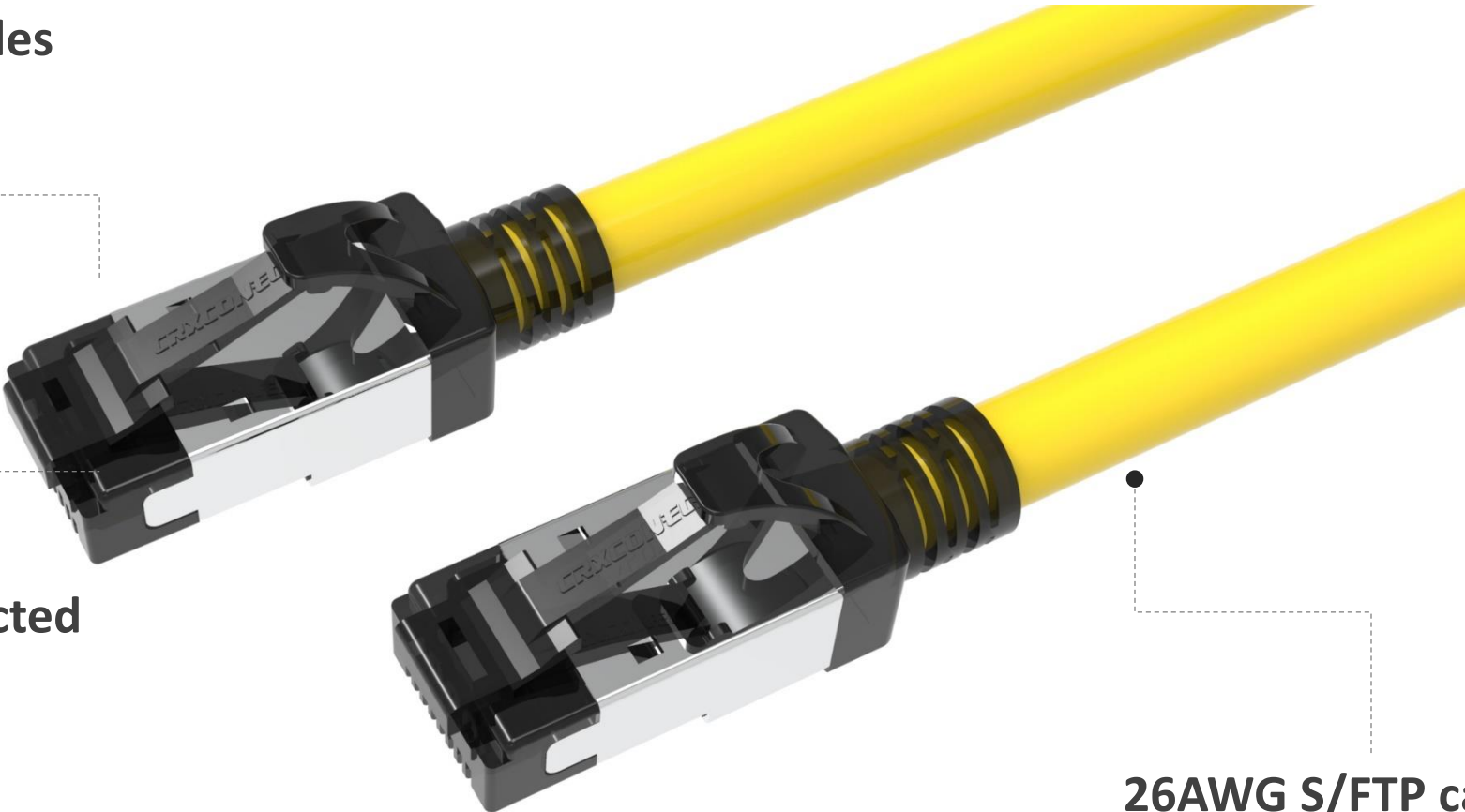
Product Features



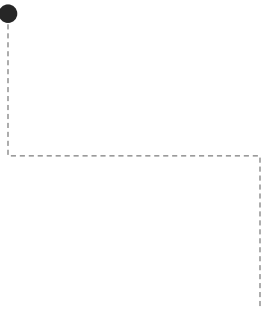
3 Prong Blades



Snagless boot protected



26AWG S/FTP cable



GHMT Verified Cat.8 Copper System Certification

2 Connector Channel (30m), Copper, Class I up to 2GHz

GHMT Type Approval

GHMT_Zertifikat.jpg

The test results which were determined in the course of the measurement refer to the submitted specimen. Any future technical modifications of the verified products are subject to the responsibility of the manufacturer.

This Certificate refers to the comprehensive test report **no. P5696a-19-E** and shall only be applicable in conjunction with the test report. This certificate is valid 24 months after date of issue.

Bexbach, 13. December 2019



Dirk Wilhelm, engineer
(Chairman of the Managing Board)



*Test laboratory accredited by DAkkS in accordance with DIN EN ISO/IEC 17025.
The accreditation is valid for the test methods listed in certificate **D-PL-17559-01-00**.*

GHMT AG

In der Kolling 13
66450 Bexbach / Germany

P0 box 11 16
66442 Bexbach / Germany

T: +49 6826 92 28-0
F: +49 6826 92 28-290

info@ghmt.de
www.ghmt.de

**RELIABILITY IN TOTAL
REQUIRES ACCURACY IN DETAIL.**

Cat.8 Channel Fluke Test Report



Cable ID: CAT8-5-3-3

Date / Time: 08/21/2017 01:50:50 PM
Headroom 2.4 dB (NEXT 12-36)
Test Limit: TIA Cat 8 Channel (+All)
 Cable Type: Cat 8 S-FTP
 NVP: 78.0%

Operator: ANNIE
 Software Version: V5.1 Build 4
 Limits Version: V6.1
 Calibration Start Date:
 Main (Module): 07/05/2017
 Remote (Module): 07/05/2017

Test Summary: PASS

Model: DSX-9000
 Main S/N: 1706360
 Remote S/N: 1707007
 Main Adaptor: DSX-CHA804
 Remote Adaptor: DSX-CHA804

Length (ft), Limit 98	[Pair 12]	39
Prop. Delay (ns), Limit 179	[Pair 78]	52
Delay Skew (ns), Limit 17	[Pair 36]	1
Resistance (ohms), Limit 6.40	[Pair 78]	1.67
Resist. Unbal. (ohms), Limit 0.100	[Pair 45]	0.014
Resist. P2P Unbal. (ohms), Limit 0.200	[Pair 36-78]	0.031



Insertion Loss Margin (dB)	[Pair 36]	16.7
Frequency (MHz)	[Pair 36]	1994.0
Limit (dB)	[Pair 36]	32.6



Cable ID: CAT8-3-24-3-170821

Date / Time: 08/21/2017 02:40:58 PM
Headroom 4.4 dB (NEXT 12-36)
Test Limit: TIA Cat 8 Channel (+All)
 Cable Type: Cat 8 S-FTP
 NVP: 78.0%

Operator: ANNIE
 Software Version: V5.1 Build 4
 Limits Version: V6.1
 Calibration Start Date:
 Main (Module): 07/05/2017
 Remote (Module): 07/05/2017

Model: DSX-9000
 Main S/N: 1706360
 Remote S/N: 1707007
 Main Adaptor: DSX-CHA804
 Remote Adaptor: DSX-CHA804

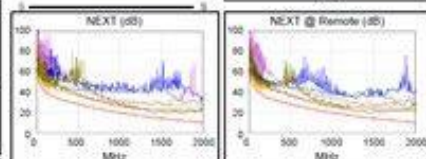
Worst Case Margin		Worst Case Value	
PASS	MAIN	SR	MAIN
Worst Pair	12-36	36-45	3
NEXT (dB)	2.4	2.4	
Freq. (MHz)	441.0	959.0	1
Limit (dB)	29.3	19.9	
Worst Pair	36	36	
PS NEXT (dB)	3.0	2.8	
Freq. (MHz)	1028.	1029.	1
Limit (dB)	16.1	16.1	

Length (ft), Limit 98	[Pair 12]	105
Prop. Delay (ns), Limit 179	[Pair 78]	138
Delay Skew (ns), Limit 17	[Pair 36]	1
Resistance (ohms), Limit 6.40	[Pair 78]	4.10
Resist. Unbal. (ohms), Limit 0.120	[Pair 45]	0.016
Resist. P2P Unbal. (ohms), Limit 0.200	[Pair 36-78]	0.033



Insertion Loss Margin (dB)	[Pair 36]	1.2
Frequency (MHz)	[Pair 36]	1990.0
Limit (dB)	[Pair 36]	32.6

Worst Case Margin		Worst Case Value	
PASS	MAIN	SR	MAIN
Worst Pair	12-36	36-45	3
NEXT (dB)	4.4	4.7	5.8
Freq. (MHz)	152.5	1386.	1758.
Limit (dB)	37.4	15.0	11.7
Worst Pair	36	36	
PS NEXT (dB)	5.4	5.0	9.3
Freq. (MHz)	1314.	1276.	1714.
Limit (dB)	13.0	13.4	9.4



Cable ID: C8-3-5-3M-ISOCCLASSI-170822-8

Date / Time: 08/22/2017 10:31:53 AM
Headroom 2.2 dB (NEXT 36-45)
Test Limit: ISO11801 Channel Class I (+All)
 Cable Type: Cat 8 S-FTP
 NVP: 78.0%

Operator: ANNIE
 Software Version: V5.1 Build 4
 Limits Version: V6.1
 Calibration Start Date:
 Main (Module): 07/05/2017
 Remote (Module): 07/05/2017

Test Summary: PASS

Model: DSX-8000
 Main S/N: 1706360
 Remote S/N: 1707007
 Main Adaptor: DSX-CHA804
 Remote Adaptor: DSX-CHA804

Length (ft)	[Pair 12]	39
Prop. Delay (ns), Limit 169	[Pair 78]	52
Delay Skew (ns), Limit 16	[Pair 36]	1
Resistance (ohms), Limit 6.40	[Pair 78]	1.70
Resist. Unbal. (ohms), Limit 0.200	[Pair 45]	0.013
Resist. P2P Unbal. (ohms), Limit 0.100	[Pair 36-78]	0.032



Insertion Loss Margin (dB)	[Pair 36]	16.7
Frequency (MHz)	[Pair 36]	1994.0
Limit (dB)	[Pair 36]	32.6

Worst Case Margin		Worst Case Value	
PASS	MAIN	SR	MAIN
Worst Pair	12-36	36-45	3
NEXT (dB)	2.3	2.2	5.6
Freq. (MHz)	440.0	959.0	1678.
Limit (dB)	29.4	20.1	12.2
Worst Pair	36	36	
PS NEXT (dB)	3.0	2.8	8.3
Freq. (MHz)	1028.	1028.	1858.
Limit (dB)	16.2	16.2	7.7



Cable ID: C8-3-24-3-ISO-170822-1

Date / Time: 08/22/2017 10:04:40 AM
Headroom 3.8 dB (NEXT 12-36)
Test Limit: ISO11801 Channel Class I (+All)
 Cable Type: Cat 8 S-FTP
 NVP: 78.0%

Operator: ANNIE
 Software Version: V5.1 Build 4
 Limits Version: V6.1
 Calibration Start Date:
 Main (Module): 07/05/2017
 Remote (Module): 07/05/2017

Test Summary: PASS

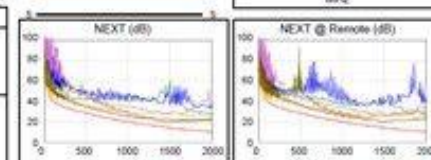
Model: DSX-8000
 Main S/N: 1706360
 Remote S/N: 1707007
 Main Adaptor: DSX-CHA804
 Remote Adaptor: DSX-CHA804

Length (ft)	[Pair 12]	105
Prop. Delay (ns), Limit 169	[Pair 78]	138
Delay Skew (ns), Limit 16	[Pair 36]	1
Resistance (ohms), Limit 6.40	[Pair 78]	4.17
Resist. Unbal. (ohms), Limit 0.200	[Pair 45]	0.014
Resist. P2P Unbal. (ohms), Limit 0.140	[Pair 36-78]	0.033



Insertion Loss Margin (dB)	[Pair 36]	1.0
Frequency (MHz)	[Pair 36]	1988.0
Limit (dB)	[Pair 36]	32.6

Worst Case Margin		Worst Case Value	
PASS	MAIN	SR	MAIN
Worst Pair	12-36	36-45	3
NEXT (dB)	3.8	4.8	5.9
Freq. (MHz)	152.5	1386.	1758.
Limit (dB)	37.4	15.0	11.6
Worst Pair	36	36	
PS NEXT (dB)	5.1	4.9	10.2
Freq. (MHz)	1278.	1068.	1752.
Limit (dB)	13.2	15.7	8.6





Annie Hsu

Overseas sales manager

Annie@crxconec.com



Ben Yang

Sales Representative

Ben@crxconec.com

Achieve Excellence With Ease
Explore more information now!



<https://www.crxconec.com>