



Various types of Lens & Solder Sealed Caps for Optical Telecom Devices.

INDUSTRIAL Technologies LLP

- ✦ Industrial Technologies LLP is a global leader in manufacturing various type of Lenses made from Optical glass material (from Ohara, Schott, Sumita and Hikari-Nikon) and special materials like Sapphire, Quartz, Spinel & other single crystals.
- ✦ Our products can also be supplied with AR coating with transmission >99%.
- ✦ Refractive Index of various materials range from 1.50 to 2.20.
- ✦ Lenses ranging in size from 0.25mm to 8.0mm.
- ✦ Our factory located in India is certified with ISO 9001, ISO 14001 and ISO 18001 Quality Systems.
- ✦ All our products are Customized based on customers drawing, design and specification.
- ✦ We also provide solder sealed caps as per customers requirement with and without AR coating.



Various types of Lens & Solder Sealed Caps for Optical Telecom Devices.

List of Common Optical Glasses

Glass Type	Refractive Index, (nd)
S-BSL7 (Ohara)	1.516
N-BK7 (Schott)	1.517
H-K9L (Cdgm)	1.517
S-TIM28 (Ohara)	1.689
N-SF8 (Schott)	1.689
S-LAH65 (Schott)	1.804
J-LASF015 (Hikari)	1.804
H-ZLAF50E (Cdgm)	1.804
N-LASF44 (Schott)	1.804
S-TIH6 (Ohara)	1.805
S-LAH53 (Ohara)	1.806
N-LASF43 (Schott)	1.806
S-LAH71 (Ohara)	1.850
N-LASF9 (Schott)	1.850
J-LASFH17 (Hikari)	2.001
J-LASFH16 (Hikari)	2.001
S-LAH79 (Ohara)	2.003

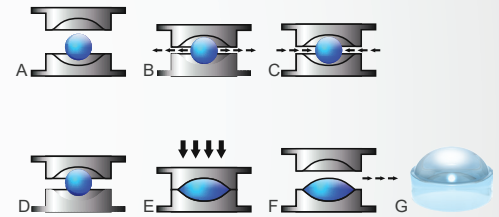
List of Common Single Crystal

Single Crystal	Refractive Index, (nd)
Sapphire	1.760
Spinel	1.727
Cubic Zirconia	2.177
Quartz/Fused Silica(SK1300) (Ohara)	1.450

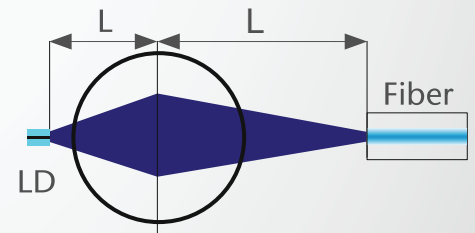
List of Common Low Tg Glasses

Glass Type	Refractive Index, (nd)	Tg Temperature
N-FK51A (Schott)	1.487	464 Deg. C
L-BSL7 (Ohara)	1.516	498 Deg. C
K-PBK40 (Sumita)	1.519	501 Deg. C
P-PK53 (Schott)	1.527	383 Deg. C
P-SK57Q1 (Schott)	1.583	439 Deg. C
L-BAL42 (Ohara)	1.583	506 Deg. C
L-BAL42P (Ohara)	1.586	506 Deg. C
P-SK57 (Schott)	1.587	493 Deg. C
L-BAL35 (Ohara)	1.589	527 Deg. C
S-NBH5 (Ohara)	1.654	524 Deg. C
L-LAL12 (Ohara)	1.678	562 Deg. C
P-SF8 (Schott)	1.681	524 Deg. C
L-TIM28 (Ohara)	1.689	504 Deg. C
L-LAH81 (Ohara)	1.806	566 Deg. C
L-LAH53 (Ohara)	1.806	574 Deg. C
P-LASF47 (Schott)	1.806	530 Deg. C
L-LAH84 (Ohara)	1.809	527 Deg. C
K-VC89 (Sumita)	1.810	528 Deg. C
L-LAH71 (Ohara)	1.850	707 Deg. C
N-LASF46B (Schott)	1.904	611 Deg. C
P-SF68 (Schott)	2.005	428 Deg. C
K-PSFn203 (Sumita)	2.017	444 Deg. C
L-BBH1 (Ohara)	2.102	350 Deg. C
L-BBH1 (Ohara)	2.102	350 Deg. C

Application : Glass Molding



Application : Optical Sub-Assembly in Fiber Optics



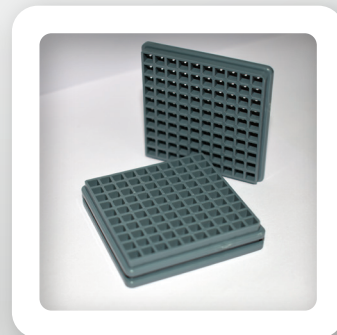
Packing Options



Conductive Plastic Vials



Gel pak



Waffle Plastic Tray



Glass Bottle