



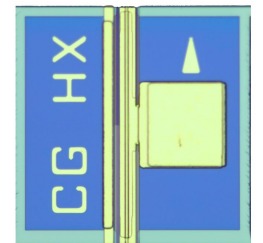
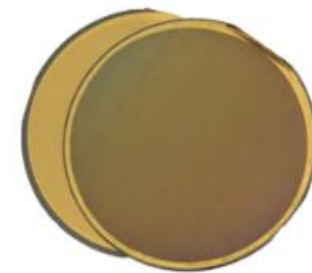
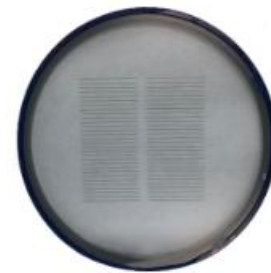
Full range of capabilities from chip design, epitaxy, and wafer processing to testing.

Features & Applications

- Multi Quantum Well Distributed Feedback Laser
- Uncooled Operation up to $-40^{\circ}\text{C} \sim +85^{\circ}\text{C}$
- Qualified for Telcordia GR-468
- PON, Access, Optical Ethernet, SDH

Portfolio

- 2.5G DFB Laser Diode Chip at 1270nm
- 10G DFB Laser Diode Chip at 1270nm
- 2.5G DFB Laser Diode Chip at 1310nm
- 10G DFB Laser Diode Chip at 1310nm



[Learn More](#)